

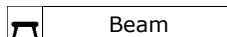
Individual Judges Scores



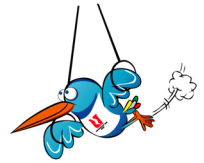
Rank	Bib	Name	NOC Code	SV	B1 NED	B2 PRK	B3 TUR	B4 ITA	B5 RUS	B6 FIN	Pen.	Total
1	712	FAN Ye	CHN	9.8	9.20	9.10	9.15	9.25	9.20	9.25		9.200
2	704	HAE YON Ri	PRK	9.6	9.00	9.00	9.00	9.15	9.10	8.95		9.025
3	705	SUN Pyon Gwang	PRK	9.6	8.95	9.00	8.90	8.95	8.95	8.80		8.937
4	671	HARMES Suzanne	NED	9.7	8.95	8.80	8.75	8.85	8.90	9.00		8.875
5	732	ZIGANCHINA Natalia	RUS	9.6	8.70	8.80	8.75	8.90	9.10	8.95		8.850
6	711	ZHANG Nan	CHN	9.6	8.95	8.80	8.65	8.75	8.95	8.85		8.837
7	662	COMIN Camila	BRA	9.6	8.70	8.45	8.55	8.55	8.70	8.70		8.625
8	563	GARGANO Maria Teresa	ITA	9.5	8.65	8.30	8.50	8.90	8.60	8.45		8.550
8	761	MOGOLLON Iyerida	MEX	9.6	8.45	8.45	8.50	8.60	8.70	8.65		8.550
10	642	UEMURA Miki	JPN	9.8	8.35	8.25	8.45	8.45	8.20	8.50		8.375
11	583	KARADUMAN Ebru	TUR	9.1	8.15	8.20	8.10	8.30	8.20	8.30		8.212
12	741	MARESOVA Katerina	CZE	9.2	8.25	8.15	8.40	8.15	8.25	8.10		8.200
13	733	ZAMOLODCHIKOVA Eleni	RUS	9.1	8.05	8.00	8.20	8.35	8.55	8.15		8.187
14	561	BERGAMELLI Monica	ITA	9.5	8.10	7.90	8.05	8.40	8.20	8.15		8.125
15	612	TWEDDLE Elizabeth	GBR	9.5	8.00	8.05	8.15	8.15	8.20	8.05		8.100
16	533	ALMENOKSA Annukka	FIN	9.3	8.00	7.90	8.00	7.90	8.00	8.00		7.975
17	661	MONARI Roberta	BRA	8.9	7.95	7.85	8.00	7.90	7.80	7.95		7.912
18	691	SEKEROVA Zuzana	SVK	9.5	7.80	7.95	7.50	8.05	8.15	7.80		7.900
19	611	FYFE Carolyn	GBR	8.8	7.70	7.55	7.70	7.50	7.50	7.70		7.612
20	643	SAHARA Ayaka	JPN	9.2	7.40	7.55	7.70	7.60	7.55	7.40		7.525
21	683	PROSKURINA Marina	UKR	9.3	7.60	7.50	7.40	7.45	7.55	7.45		7.487
22	684	MAKSYUTA Valeriya	UKR	9.4	7.40	7.50	7.50	7.40	7.80	7.50		7.475
23	631	ABD HAMID Nurul Fatiha	MAS	9.1	7.20	7.20	6.65	7.10	7.10	7.05		7.112
24	511	HANSSON Kathrine	NOR	9.0	7.25	7.15	7.50	6.90	7.05	6.90		7.087

Legend:

- SV - Start value
 B1 - B6 - Panel 'B' judges 1 - 6
 Pen. Penalty



Beam




Individual Judges Scores



Rank	Bib	Name	NOC Code	SV	B1 BLR	B2 JPN	B3 CYP	B4 MAS	B5 NZL	B6 SLO	Pen.	Total
1	393	KIM Dae Eun	KOR	10.0	9.40	9.65	9.50	9.50	9.10	9.40		9.450
2	424	TOMITA Hiroyuki	JPN	9.7	9.35	9.45	9.40	9.35	9.45	9.35		9.387
3	402	LIANG Fuliang	CHN	10.0	9.55	9.50	9.30	9.65	9.20	9.45	0.1	9.350
4	382	KUVAKIN Vadym	UKR	9.7	9.35	9.30	9.30	9.15	9.35	9.30		9.312
5	221	GOLDING Grant	CAN	9.5	9.10	9.05	9.15	9.15	9.10	9.10		9.112
5	222	SANDY Casey	CAN	9.6	9.25	9.00	9.15	9.05	9.10	9.15		9.112
7	31	NG Shu Wai	MAS	9.7	9.15	9.10	9.25	9.45	9.10	9.10	0.1	9.050
8	412	GUILLE Cedric	FRA	9.6	9.15	8.90	9.15	9.10	8.90	9.25	0.1	8.975
9	384	SCAYEV Amdriy	UKR	9.3	8.90	8.90	8.90	8.85	8.60	8.95		8.887
10	335	JEFFERIS Joshua	AUS	9.4	8.95	8.95	8.85	8.95	8.95	8.85	0.1	8.825
11	423	KASHIMA Takehiro	JPN	9.7	9.10	9.25	9.00	9.15	9.10	9.10	0.3	8.812
12	262	SAVITSKI Dimitri	BLR	9.4	8.90	8.65	8.60	8.70	8.50	8.95	0.1	8.612
13	413	MILLOT Damien	FRA	8.9	8.45	8.20	8.50	8.55	8.50	8.35		8.450
14	306	CAMPOS Manuel Jorge Alr	POR	9.3	8.35	8.30	8.40	8.40	8.55	8.40		8.387
15	251	AMERICO Caio	BRA	9.1	8.30	8.40	8.50	8.45	8.40	8.50	0.1	8.337
15	321	AALTO Sami	FIN	9.0	8.30	8.25	8.45	8.25	8.50	8.35		8.337
17	431	KHOROKHODEIN Sergei	RUS	9.1	8.40	8.35	8.20	8.30	8.00	8.50		8.312
18	233	HETROVICS Marcell	HUN	9.0	8.30	8.10	8.35	8.20	8.20	8.40		8.262
19	365	SCHARER Christoph	SUI	8.8	8.00	8.20	8.35	8.30	8.35	8.15		8.250
20	253	RODRIGUES Mosiah	BRA	9.0	8.20	8.20	8.30	8.20	8.25	8.35		8.237
21	312	CHOL JIN Ro	PRK	9.2	8.35	8.50	8.40	8.50	8.40	8.30	0.2	8.212
22	362	RAMSEIER Mark	SUI	8.9	8.10	8.15	8.35	8.00	8.00	8.25	0.1	8.025
23	293	SAN MIGUEL Ivan	ESP	8.7	7.90	8.00	8.00	8.10	7.90	7.80		7.950
24	403	WANG Heng	CHN	8.9	7.80	7.80	7.50	7.90	7.60	7.80		7.750

Legend:

- SV - Start value
 B1 - B6 - Panel 'B' judges 1 - 6
 Pen. Penalty

 Floor




Individual Judges Scores

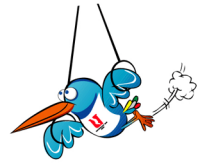


Rank	Bib	Name	NOC Code	SV	B1 NOR	B2 SVK	B3 RUS	B4 MAS	B5 TUR	B6 BRA	Pen.	Total
1	712	FAN Ye	CHN	9.9	9.25	9.40	9.50	9.50	9.50	9.35		9.437
2	733	ZAMOLODCHIKOVA Elena	RUS	9.7	9.20	9.15	9.20	9.20	9.10	9.15		9.175
3	561	BERGAMELLI Monica	ITA	9.6	9.00	9.10	9.15	9.10	9.15	8.85		9.087
4	612	TWEDDLE Elizabeth	GBR	9.6	8.90	9.05	9.05	9.10	9.05	9.10		9.062
5	563	GARGANO Maria Teresa	ITA	9.8	9.00	9.05	9.05	9.05	9.05	8.90		9.037
5	671	HARMES Suzanne	NED	9.8	9.10	9.05	8.95	9.25	9.05	8.95		9.037
7	683	PROSKURINA Marina	UKR	9.7	8.90	8.95	9.00	8.95	9.15	8.90		8.950
8	732	ZIGANCHINA Natalia	RUS	9.4	8.70	8.75	9.00	8.85	8.80	8.55		8.775
9	711	ZHANG Nan	CHN	9.8	8.70	8.55	8.60	8.95	8.70	8.75		8.687
10	684	MAKSYUTA Valeriya	UKR	9.7	8.40	8.45	8.65	8.70	8.70	8.75		8.625
11	662	COMIN Camila	BRA	9.5	8.50	8.70	8.55	8.95	8.55	8.65		8.612
12	705	SUN Pyon Gwang	PRK	9.7	8.50	8.35	8.55	8.40	8.70	8.75		8.537
13	691	SEKEROVA Zuzana	SVK	9.4	8.50	8.90	8.70	8.45	8.45	8.45		8.525
14	741	MARESOVA Katerina	CZE	9.4	8.60	8.70	8.25	8.60	8.50	8.30		8.500
15	642	UEMURA Miki	JPN	9.5	8.70	8.35	8.30	8.25	8.55	8.60		8.450
16	661	MONARI Roberta	BRA	9.2	8.20	8.45	8.50	8.55	8.35	8.35		8.412
17	704	HAE YON Ri	PRK	9.3	8.25	8.10	7.90	8.10	8.45	8.30	0.1	8.087
18	611	FYFE Carolyn	GBR	9.1	8.10	8.05	7.80	8.20	8.20	7.80		8.037
19	533	ALMENOKSA Annukka	FIN	9.1	7.90	7.95	7.80	8.10	8.10	8.10		8.012
20	761	MOGOLLON Iyerida	MEX	9.4	7.90	7.90	7.55	8.05	8.10	7.95		7.950
21	583	KARADUMAN Ebru	TUR	9.0	7.80	7.85	7.80	7.75	7.90	7.70		7.800
22	631	ABD HAMID Nurul Fatiha	MAS	8.9	7.70	8.05	7.90	7.80	7.95	7.90	0.1	7.787
23	643	SAHARA Ayaka	JPN	8.9	7.70	7.65	7.45	7.70	7.60	7.60	0.1	7.537
24	511	HANSSON Kathrine	NOR	8.9	7.80	7.65	7.65	7.40	7.65	7.20	0.2	7.387

Legend:

- SV - Start value
 B1 - B6 - Panel 'B' judges 1 - 6
 Pen. - Penalty

 Floor




Individual Judges Scores

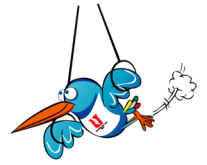


Rank	Bib	Name	NOC Code	SV	B1 FIN	B2 UKR	B3 POL	B4 SCG	B5 KAZ	B6 DEN	Pen.	Total
1	423	KASHIMA Takehiro	JPN	10.0	9.70	9.65	9.60	9.45	9.70	9.70		9.662
2	424	TOMITA Hiroyuki	JPN	10.0	9.60	9.50	9.50	9.50	9.50	9.60		9.525
3	431	KHOROKHODEIN Sergei	RUS	9.9	9.45	9.55	9.45	9.55	9.55	9.45		9.500
4	365	SCHARER Christoph	SUI	9.8	9.35	9.25	9.45	9.20	9.25	9.15		9.262
5	393	KIM Dae Eun	KOR	9.8	9.35	9.15	9.20	9.20	9.30	9.15		9.212
6	253	RODRIGUES Mosiah	BRA	10.0	8.75	9.15	9.00	8.80	9.20	9.10		9.012
7	402	LIANG Fuliang	CHN	9.8	8.95	8.80	8.95	9.20	9.00	8.80		8.925
8	312	CHOL JIN Ro	PRK	9.4	8.90	8.95	9.00	8.85	8.95	8.85		8.912
9	335	JEFFERIS Joshua	AUS	9.3	8.85	8.85	8.75	8.80	8.95	8.80		8.825
10	222	SANDY Casey	CAN	9.3	8.80	8.85	8.80	8.70	9.00	8.80		8.812
11	293	SAN MIGUEL Ivan	ESP	9.1	8.65	8.55	8.70	8.60	8.75	8.60		8.637
12	306	CAMPOS Manuel Jorge Alr	POR	9.4	8.40	8.50	8.45	8.40	8.55	8.40		8.437
12	382	KUVAKIN Vadym	UKR	8.8	8.25	8.40	8.45	8.45	8.45	8.50		8.437
14	413	MILLOT Damien	FRA	9.5	8.50	8.40	8.35	8.50	8.40	8.30		8.412
15	221	GOLDING Grant	CAN	9.0	8.15	8.20	8.35	8.30	8.50	8.40		8.312
16	262	SAVITSKI Dimitri	BLR	9.4	8.30	8.30	8.35	7.90	8.20	8.30		8.275
17	321	AALTO Sami	FIN	8.7	8.40	8.00	8.20	8.10	8.30	8.35		8.237
17	412	GUILLE Cedric	FRA	9.0	8.30	8.25	8.20	8.15	8.20	8.30		8.237
19	384	SCAYEV Amdriy	UKR	8.8	8.05	8.35	8.10	8.10	8.40	7.90		8.150
20	31	NG Shu Wai	MAS	9.3	8.05	8.00	8.20	7.90	8.20	8.40		8.112
21	362	RAMSEIER Mark	SUI	8.8	8.10	7.95	7.90	7.70	8.10	8.15		8.012
22	251	AMERICO Caio	BRA	8.8	8.15	7.90	7.70	7.80	8.20	8.10		7.987
23	403	WANG Heng	CHN	8.5	7.45	7.70	7.65	7.60	7.60	7.70		7.637
24	233	HETROVICS Marcell	HUN	8.8	7.60	7.60	7.30	7.45	7.70	7.00		7.487

Legend:

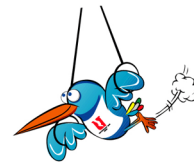
- SV - Start value
 B1 - B6 - Panel 'B' judges 1 - 6
 Pen. - Penalty

 Horizontal Bars



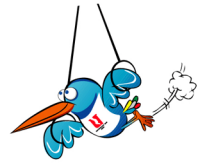
Medallists

Medal	Name	NOC
GOLD	TOMITA Hiroyuki	JPN - Japan
SILVER	KIM Dae Eun	KOR - Korea
BRONZE	KASHIMA Takehiro	JPN - Japan



Medallists

Medal	Name	NOC
GOLD	FAN Ye	CHN - People's Republic of China
SILVER	HARMES Suzanne	NED - Netherlands
BRONZE	TWEDDLE Elizabeth	GBR - Great Britain



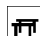
Individual Judges Scores

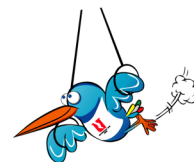


Rank	Bib	Name	NOC Code	SV	B1 ESP	B2 KAZ	B3 KOR	B4 CRO	B5 SUI	B6 FIN	Pen.	Total
1	424	TOMITA Hiroyuki	JPN	9.9	9.55	9.55	9.30	9.55	9.55	9.65		9.550
2	393	KIM Dae Eun	KOR	10.0	9.60	9.65	9.60	9.40	9.35	9.40		9.500
3	262	SAVITSKI Dimitri	BLR	9.8	9.15	9.40	9.40	9.30	9.25	9.25		9.300
4	431	KHOROKHODEIN Sergei	RUS	9.9	9.30	9.50	9.00	9.20	8.90	9.15		9.162
5	412	GUILLE Cedric	FRA	9.7	9.15	9.10	9.05	8.90	9.25	9.20		9.125
6	306	CAMPOS Manuel Jorge Alr	POR	9.5	9.15	9.30	9.00	9.10	9.10	9.05		9.100
6	423	KASHIMA Takehiro	JPN	9.9	9.10	9.15	9.15	8.90	9.05	9.10		9.100
8	402	LIANG Fuliang	CHN	9.6	9.00	9.20	8.80	9.10	9.05	9.10		9.062
9	221	GOLDING Grant	CAN	9.6	9.05	8.95	9.05	8.90	9.00	8.95		8.987
10	403	WANG Heng	CHN	9.3	8.90	8.95	8.85	8.90	8.60	8.90		8.887
11	384	SCAYEV Amdriy	UKR	9.3	8.85	9.00	8.75	8.70	8.90	8.85		8.837
12	335	JEFFERIS Joshua	AUS	9.3	8.90	8.85	8.75	8.75	8.85	8.85		8.825
13	222	SANDY Casey	CAN	9.5	8.80	8.80	8.85	8.80	8.80	8.80		8.800
14	233	HETROVICS Marcell	HUN	9.2	8.65	8.90	8.50	8.70	8.55	8.75		8.662
15	312	CHOL JIN Ro	PRK	9.3	8.30	8.80	8.75	8.60	8.50	8.60		8.612
16	31	NG Shu Wai	MAS	8.9	8.40	8.50	8.35	8.30	8.15	8.35		8.350
17	362	RAMSEIER Mark	SUI	8.9	8.30	8.30	8.20	8.20	8.40	8.30		8.275
18	365	SCHARER Christoph	SUI	9.2	8.10	8.20	8.45	7.90	8.30	8.20		8.200
19	251	AMERICO Caio	BRA	9.0	8.20	8.20	8.25	7.80	8.00	8.25		8.162
20	382	KUVAKIN Vadym	UKR	8.7	8.00	7.95	7.60	7.90	7.80	7.80		7.862
21	413	MILLOT Damien	FRA	8.6	7.70	7.80	7.70	7.80	7.70	7.80		7.750
22	253	RODRIGUES Mosiah	BRA	8.3	7.30	7.60	7.50	7.40	7.45	7.45		7.450
23	321	AALTO Sami	FIN	8.0	7.30	6.90	7.20	7.10	7.25	6.85		7.112
24	293	SAN MIGUEL Ivan	ESP	8.3	7.30	7.00	7.20	6.70	7.05	7.05		7.075

Legend:

- SV - Start value
 B1 - B6 - Panel 'B' judges 1 - 6
 Pen. - Penalty

 Parallel Bars



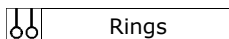
Individual Judges Scores

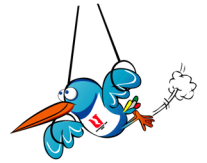


Rank	Bib	Name	NOC Code	SV	B1 AUS	B2 HUN	B3 PRK	B4 RUS	B5 POL	B6 CHN	Pen.	Total
1	424	TOMITA Hiroyuki	JPN	10.0	9.60	9.70	9.70	9.55	9.60	9.50		9.612
2	393	KIM Dae Eun	KOR	10.0	9.30	9.30	9.50	9.55	9.40	9.65		9.437
3	221	GOLDING Grant	CAN	10.0	9.35	9.20	9.60	9.35	9.25	9.40		9.337
4	431	KHOROKHODEIN Sergei	RUS	9.9	9.20	9.25	9.20	9.45	9.40	9.25		9.275
5	335	JEFFERIS Joshua	AUS	9.9	9.40	9.30	9.20	9.25	9.20	8.90		9.237
6	262	SAVITSKI Dimitri	BLR	9.7	9.25	9.15	9.15	9.10	9.05	9.15		9.137
7	403	WANG Heng	CHN	10.0	9.20	8.90	9.10	9.15	8.90	9.35		9.087
8	312	CHOL JIN Ro	PRK	9.6	9.10	9.10	9.10	9.00	9.00	9.15		9.075
9	382	KUVAKIN Vadym	UKR	9.6	9.00	9.00	9.10	9.10	9.05	9.10		9.062
10	384	SCAYEV Amdriy	UKR	9.6	8.90	9.00	9.10	9.10	8.95	9.00		9.012
11	293	SAN MIGUEL Ivan	ESP	9.7	9.00	8.85	8.95	9.10	9.00	9.05		9.000
12	362	RAMSEIER Mark	SUI	9.6	9.00	8.80	9.00	8.80	8.80	9.00		8.900
13	233	HETROVICS Marcell	HUN	9.5	8.90	8.90	9.00	8.85	8.90	8.70		8.887
14	222	SANDY Casey	CAN	9.4	8.85	8.85	9.00	8.80	8.75	8.80		8.825
15	423	KASHIMA Takehiro	JPN	9.3	8.90	8.70	8.95	8.65	8.70	8.60		8.737
16	402	LIANG Fuliang	CHN	9.3	8.70	8.55	8.90	8.55	8.55	8.80		8.650
17	31	NG Shu Wai	MAS	9.4	8.60	8.60	8.60	8.30	8.20	8.90		8.525
18	306	CAMPOS Manuel Jorge Alr	POR	9.2	8.20	8.50	8.40	8.30	8.30	8.40		8.350
19	412	GUILLE Cedric	FRA	8.9	8.20	8.10	8.30	8.00	8.10	8.30		8.175
20	413	MILLOT Damien	FRA	8.9	8.00	8.00	8.00	7.90	7.90	7.90		7.950
21	253	RODRIGUES Mosiah	BRA	8.7	7.95	7.80	8.10	7.80	7.90	8.00		7.912
22	365	SCHARER Christoph	SUI	8.5	7.80	7.70	7.70	7.60	7.70	7.80		7.725
23	251	AMERICO Caio	BRA	8.6	7.70	7.70	7.80	7.65	7.60	7.80		7.712
24	321	AALTO Sami	FIN	8.4	7.30	7.30	7.30	7.45	7.30	7.80		7.337

Legend:

SV - Start value
 B1 - B6 - Panel 'B' judges 1 - 6
 Pen. Penalty





Individual Judges Scores

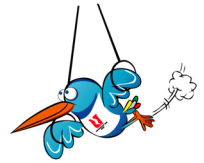


Rank	Bib	Name	NOC Code	SV	B1 CHN	B2 SCG	B3 CYP	B4 TPE	B5 KOR	B6 JPN	Pen.	Total
1	705	SUN Pyon Gwang	PRK	10.0	9.35	9.25	9.50	9.50	9.50	9.45		9.450
2	612	TWEDDLE Elizabeth	GBR	9.9	9.30	9.40	9.35	9.40	9.40	9.40		9.387
3	642	UEMURA Miki	JPN	10.0	9.30	9.30	9.25	9.20	9.40	9.35		9.300
4	671	HARMES Suzanne	NED	9.8	9.20	9.05	9.00	9.10	9.10	8.90		9.062
5	661	MONARI Roberta	BRA	9.8	8.95	8.95	9.10	8.90	9.10	9.10		9.025
5	712	FAN Ye	CHN	9.8	9.20	9.00	8.85	9.15	8.90	9.05		9.025
7	711	ZHANG Nan	CHN	9.6	9.10	8.85	8.85	9.05	8.70	8.90		8.912
8	561	BERGAMELLI Monica	ITA	9.7	8.90	8.85	8.95	8.85	9.00	8.85		8.887
9	732	ZIGANCHINA Natalia	RUS	9.5	8.50	8.80	8.75	8.75	8.60	8.80		8.725
10	704	HAE YON Ri	PRK	9.5	8.65	8.75	8.85	8.65	8.80	8.55		8.712
11	691	SEKEROVA Zuzana	SVK	9.5	8.60	8.80	8.70	8.80	8.70	8.60		8.700
12	741	MARESOVA Katerina	CZE	9.5	8.30	8.60	8.60	8.65	8.70	8.65		8.625
13	684	MAKSYUTA Valeriya	UKR	9.4	8.50	8.55	8.55	8.65	8.75	8.70		8.612
14	733	ZAMLODCHIKOVA Elena	RUS	9.5	8.70	8.60	8.30	8.40	8.70	8.65		8.587
15	662	COMIN Camila	BRA	9.8	8.60	8.50	8.45	8.55	8.85	8.55		8.550
16	563	GARGANO Maria Teresa	ITA	9.2	8.55	8.40	8.25	8.10	8.30	8.40		8.337
17	631	ABD HAMID Nurul Fatiha	MAS	9.2	8.20	8.35	8.35	8.30	8.40	8.30		8.325
18	643	SAHARA Ayaka	JPN	9.2	8.00	8.00	8.05	8.10	8.00	8.20		8.037
19	583	KARADUMAN Ebru	TUR	9.0	8.00	7.60	7.65	8.15	8.00	8.10		7.937
20	533	ALMENOKSA Annukka	FIN	8.9	8.10	7.90	7.85	7.80	8.00	7.95		7.925
21	611	FYFE Carolyn	GBR	8.8	8.00	7.80	7.55	7.80	7.60	7.95		7.787
22	511	HANSSON Kathrine	NOR	9.1	8.20	7.60	7.70	7.85	7.80	7.75		7.775
23	683	PROSKURINA Marina	UKR	9.2	7.70	7.60	7.75	7.55	7.60	7.40		7.612
24	761	MOGOLLON Iyerida	MEX	8.8	7.10	6.90	6.95	6.95	7.05	6.95		6.975

Legend:

- SV - Start value
 B1 - B6 - Panel 'B' judges 1 - 6
 Pen. - Penalty

Uneven Bars



Individual Judges Scores



Rank	Bib	Name	NOC Code	SV	B1 KOR	B2 FIN	B3 JPN	B4 NZL	B5 CHN	B6 UKR	Pen.	Total
1	683	PROSKURINA Marina	UKR	9.7	9.30	9.25	9.30	9.25	9.30	9.30		9.287
2	684	MAKSYUTA Valeriya	UKR	9.8	9.30	9.20	9.00	9.35	9.20	9.25		9.237
3	732	ZIGANCHINA Natalia	RUS	9.7	9.20	9.00	9.20	9.20	9.10	9.30		9.175
4	612	TWEDDLE Elizabeth	GBR	9.7	9.00	9.10	9.05	9.10	9.05	9.20		9.075
5	643	SAHARA Ayaka	JPN	9.6	8.90	9.10	9.05	9.05	9.05	9.00		9.037
5	711	ZHANG Nan	CHN	9.7	9.10	9.05	9.10	8.95	9.05	8.95		9.037
7	671	HARMES Suzanne	NED	9.7	8.90	8.90	9.15	9.25	9.00	9.05		9.025
8	642	UEMURA Miki	JPN	9.5	8.90	9.00	8.90	9.00	9.05	9.00		8.975
9	691	SEKEROVA Zuzana	SVK	9.6	8.90	8.90	8.95	9.05	8.95	9.05		8.962
9	741	MARESOVA Katerina	CZE	9.6	9.00	8.80	9.05	8.90	8.90	9.10		8.962
11	563	GARGANO Maria Teresa	ITA	9.5	8.90	8.90	8.75	8.90	8.85	9.05		8.887
12	561	BERGAMELLI Monica	ITA	9.4	8.90	8.70	8.80	8.90	8.85	8.95		8.862
12	662	COMIN Camila	BRA	9.5	8.90	8.80	8.80	8.90	8.85	9.00		8.862
14	761	MOGOLLON Iyerida	MEX	9.5	8.80	8.90	8.75	8.95	8.75	8.75		8.800
15	712	FAN Ye	CHN	9.4	8.70	8.75	8.70	8.85	8.85	8.75		8.762
16	733	ZAMOLODCHIKOVA Elena	RUS	9.8	8.70	8.75	8.60	8.70	8.50	8.75		8.687
17	511	HANSSON Kathrine	NOR	9.4	8.60	8.70	8.65	8.75	8.75	8.60		8.675
17	705	SUN Pyon Gwang	PRK	9.8	8.80	8.60	8.45	8.70	8.75	8.65		8.675
19	611	FYFE Carolyn	GBR	9.2	8.70	8.50	8.50	8.75	8.60	8.65		8.612
20	631	ABD HAMID Nurul Fatiha	MAS	9.2	8.50	8.55	8.45	8.60	8.60	8.55		8.550
20	704	HAE YON Ri	PRK	9.7	8.50	8.60	8.60	8.85	8.40	8.50		8.550
22	661	MONARI Roberta	BRA	9.7	8.50	8.50	8.50	8.60	8.60	8.50		8.525
23	583	KARADUMAN Ebru	TUR	9.1	8.30	8.45	8.35	8.35	8.30	8.25		8.325
24	533	ALMENOKSA Annukka	FIN	9.2	7.80	7.70	7.40	7.60	7.70	7.80		7.700

Legend:

- SV** - Start value
B1 - B6 - Panel 'B' judges 1 - 6
Pen. - Penalty

	Vault
--	-------



Individual Judges Scores



Rank	Bib	Name	NOC Code	SV	B1 KOR	B2 FIN	B3 JPN	B4 NZL	B5 CHN	B6 UKR	Pen.	Total
1	683	PROSKURINA Marina	UKR	9.7	9.30	9.25	9.30	9.25	9.30	9.30		9.287
2	684	MAKSYUTA Valeriya	UKR	9.8	9.30	9.20	9.00	9.35	9.20	9.25		9.237
3	732	ZIGANCHINA Natalia	RUS	9.7	9.20	9.00	9.20	9.20	9.10	9.30		9.175
4	612	TWEDDLE Elizabeth	GBR	9.7	9.00	9.10	9.05	9.10	9.05	9.20		9.075
5	643	SAHARA Ayaka	JPN	9.6	8.90	9.10	9.05	9.05	9.05	9.00		9.037
5	711	ZHANG Nan	CHN	9.7	9.10	9.05	9.10	8.95	9.05	8.95		9.037
7	671	HARMES Suzanne	NED	9.7	8.90	8.90	9.15	9.25	9.00	9.05		9.025
8	642	UEMURA Miki	JPN	9.5	8.90	9.00	8.90	9.00	9.05	9.00		8.975
9	691	SEKEROVA Zuzana	SVK	9.6	8.90	8.90	8.95	9.05	8.95	9.05		8.962
9	741	MARESOVA Katerina	CZE	9.6	9.00	8.80	9.05	8.90	8.90	9.10		8.962
11	563	GARGANO Maria Teresa	ITA	9.5	8.90	8.90	8.75	8.90	8.85	9.05		8.887
12	561	BERGAMELLI Monica	ITA	9.4	8.90	8.70	8.80	8.90	8.85	8.95		8.862
12	662	COMIN Camila	BRA	9.5	8.90	8.80	8.80	8.90	8.85	9.00		8.862
14	761	MOGOLLON Iyerida	MEX	9.5	8.80	8.90	8.75	8.95	8.75	8.75		8.800
15	712	FAN Ye	CHN	9.4	8.70	8.75	8.70	8.85	8.85	8.75		8.762
16	733	ZAMOLODCHIKOVA Elena	RUS	9.8	8.70	8.75	8.60	8.70	8.50	8.75		8.687
17	511	HANSSON Kathrine	NOR	9.4	8.60	8.70	8.65	8.75	8.75	8.60		8.675
17	705	SUN Pyon Gwang	PRK	9.8	8.80	8.60	8.45	8.70	8.75	8.65		8.675
19	611	FYFE Carolyn	GBR	9.2	8.70	8.50	8.50	8.75	8.60	8.65		8.612
20	631	ABD HAMID Nurul Fatiha	MAS	9.2	8.50	8.55	8.45	8.60	8.60	8.55		8.550
20	704	HAE YON Ri	PRK	9.7	8.50	8.60	8.60	8.85	8.40	8.50		8.550
22	661	MONARI Roberta	BRA	9.7	8.50	8.50	8.50	8.60	8.60	8.50		8.525
23	583	KARADUMAN Ebru	TUR	9.1	8.30	8.45	8.35	8.35	8.30	8.25		8.325
24	533	ALMENOKSA Annukka	FIN	9.2	7.80	7.70	7.40	7.60	7.70	7.80		7.700

Legend:

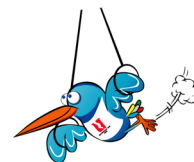
- SV** - Start value
B1 - B6 - Panel 'B' judges 1 - 6
Pen. - Penalty

	Vault
--	-------



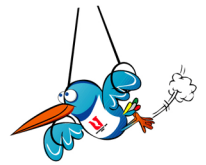
Medallists

Medal	NOC	Names
GOLD	JPN - Japan	BABA Ryosuke KASHIMA Takehiro KUWAHARA Shun MORI Takehito TOMITA Hiroyuki
SILVER	KOR - Korea	GO Jun Woong KIM Dae Eun KIM Seung Il SIN Seop YOO Won Chul
BRONZE	CHN - People's Republic of Chin	CHEN Yibing DU Min GONG Lei LIANG Fuliang WANG Heng WANG Nian



Medallists

Medal	NOC	Names
GOLD	CHN - People's Republic of China	CHEN Miaojie FAN Ye LIU Danxia WANG Tiantian ZHANG Nan
SILVER	PRK - DPR Korea	HAE YON Ri JONG OK Han SUN Pyon Gwang UN JONG Kim YUN MI Kang
BRONZE	RUS - Russian Federation	AZARKEVICH Olga CHIBISKOVA Maria ORLOVA Ekaterina ZAMOLODCHIKOVA Elena ZIGANCHINA Natalia



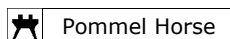
Individual Judges Scores



Rank	Bib	Name	NOC Code	SV	B1 CHN	B2 CAN	B3 POR	B4 SLO	B5 BRA	B6 GBR	Pen.	Total
1	423	KASHIMA Takehiro	JPN	10.0	9.55	9.75	9.80	9.65	9.65	9.65		9.675
2	402	LIANG Fuliang	CHN	9.9	9.55	9.45	9.30	9.50	9.60	9.35		9.462
3	306	CAMPOS Manuel Jorge Alr	POR	10.0	9.40	9.30	9.40	9.30	9.35	9.35		9.350
4	431	KHOROKHODEIN Sergei	RUS	9.8	9.40	9.40	9.20	9.30	9.15	9.25		9.287
5	222	SANDY Casey	CAN	10.0	9.25	9.35	9.30	9.30	8.90	9.10		9.237
6	384	SCAYEV Amdriy	UKR	9.6	9.20	9.20	9.10	9.25	9.00	9.30		9.187
7	382	KUVAKIN Vadym	UKR	9.6	8.65	9.10	9.30	9.15	9.15	8.95		9.087
8	31	NG Shu Wai	MAS	9.4	9.00	8.95	9.00	8.95	8.85	8.85		8.937
9	393	KIM Dae Eun	KOR	9.6	8.80	8.70	8.60	8.45	8.75	8.40		8.625
10	403	WANG Heng	CHN	9.4	8.65	8.60	8.50	8.65	8.60	8.45		8.587
11	293	SAN MIGUEL Ivan	ESP	9.5	8.70	8.65	8.40	7.85	8.60	8.60		8.562
12	321	AALTO Sami	FIN	9.5	8.50	8.45	8.50	8.30	8.50	8.60		8.487
13	413	MILLOT Damien	FRA	9.4	8.50	8.35	8.50	8.35	8.40	8.55		8.437
13	424	TOMITA Hiroyuki	JPN	9.5	8.60	8.40	8.20	8.35	8.60	8.40		8.437
15	262	SAVITSKI Dimitri	BLR	9.3	8.40	8.30	8.10	8.40	8.40	8.30		8.350
16	335	JEFFERIS Joshua	AUS	9.6	8.55	8.40	8.20	8.00	8.40	8.30		8.325
17	221	GOLDING Grant	CAN	9.2	8.20	8.40	8.00	8.20	8.20	8.30		8.225
18	365	SCHARER Christoph	SUI	9.3	8.30	8.25	8.10	8.15	8.20	8.20		8.200
19	251	AMERICO Caio	BRA	9.2	7.80	7.90	7.70	7.95	7.95	7.90		7.887
20	412	GUILLE Cedric	FRA	8.7	7.80	7.20	7.70	7.70	7.70	7.30		7.600
21	233	HETROVICS Marcell	HUN	9.1	7.80	7.70	7.40	7.60	7.40	7.60		7.575
22	362	RAMSEIER Mark	SUI	9.1	7.95	7.60	7.50	7.40	7.70	7.40		7.550
23	312	CHOL JIN Ro	PRK	9.0	7.40	7.50	7.40	7.65	7.80	7.20		7.487
24	253	RODRIGUES Mosiah	BRA	9.0	7.40	7.10	6.90	7.15	6.90	6.30		7.012

Legend:


- SV - Start value
 B1 - B6 - Panel 'B' judges 1 - 6
 Pen. - Penalty

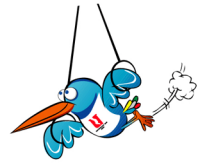


**Results****CORRECTED**

Rank	Bib	Name	NOC Code	Total
1	711	ZHANG Nan	CHN	9.487
2	712	FAN Ye	CHN	9.200
3	612	TWEDDLE Elizabeth	GBR	8.950
4	564	COLOMBO Ilaria	ITA	8.862
5	671	HARMES Suzanne	NED	8.812
6	683	PROSKURINA Marina	UKR	8.787
7	761	MOGOLLON Iyerida	MEX	8.712
8	642	UEMURA Miki	JPN	8.662

Legend:

	Beam
---	------

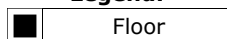


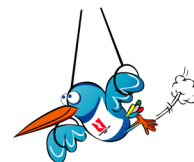
Results



Rank	Bib	Name	NOC Code	Total
1	225	O'NEILL Brandon	CAN	9.662
2	402	LIANG Fuliang	CHN	9.575
3	424	TOMITA Hiroyuki	JPN	9.400
4	355	AUTALIPOV Sain	KAZ	9.387
5	231	GAL Robert	HUN	9.287
6	353	YERIMBETOV Yernar	KAZ	8.975
7	306	CAMPOS Manuel Jorge Almeida	POR	8.962
8	393	KIM Dae Eun	KOR	8.900

Legend:






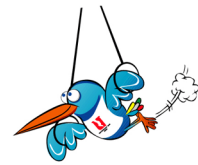
Results



Rank	Bib	Name	NOC Code	Total
1	663	DOS SANTOS Daiane	BRA	9.525
2	712	FAN Ye	CHN	9.362
3	711	ZHANG Nan	CHN	9.162
4	735	AZARKEVICH Olga	RUS	9.025
5	682	KOZICH Alina	UKR	8.962
6	561	BERGAMELLI Monica	ITA	8.862
7	612	TWEDDLE Elizabeth	GBR	8.762
8	703	UN JONG Kim	PRK	8.025

Legend:

	Floor
---	-------

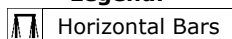


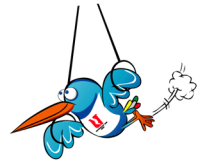
Results



Rank	Bib	Name	NOC Code	Total
1	424	TOMITA Hiroyuki	JPN	9.725
2	253	RODRIGUES Mosiah	BRA	9.425
3	431	KHOROKHODEIN Sergei	RUS	9.387
4	365	SCHARER Christoph	SUI	9.275
5	261	SAVENKOU Denis	BLR	9.175
6	423	KASHIMA Takehiro	JPN	9.000
7	353	YERIMBETOV Yernar	KAZ	8.300
8	364	SAGER Philippe	SUI	7.362

Legend:



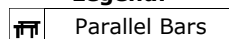


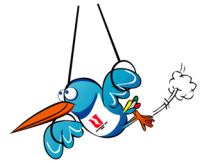
Results



Rank	Bib	Name	NOC Code	Total
1	423	KASHIMA Takehiro	JPN	9.487
2	353	YERIMBETOV Yernar	KAZ	9.412
3	292	VIVO Andreu	ESP	9.387
4	153	PETKOVSEK Mitja	SLO	9.275
5	424	TOMITA Hiroyuki	JPN	9.250
6	393	KIM Dae Eun	KOR	9.087
6	434	RYAZANOV Uri	RUS	9.087
8	261	SAVENKOU Denis	BLR	8.875

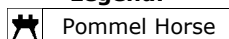
Legend:





Results

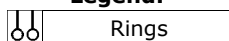
Rank	Bib	Name	NOC Code	Total
1	161	SELIGMAN Robert	CRO	9.650
2	264	IHNATOVICH Alexsei	BLR	9.537
3	131	LIN Hsiang-Wei	TPE	9.475
4	306	CAMPOS Manuel Jorge Almeida	POR	9.425
4	402	LIANG Fuliang	CHN	9.425
6	433	NIGMADZYANOV Ruslan	RUS	9.200
7	423	KASHIMA Takehiro	JPN	9.087
8	385	SKYBA Pavlo	UKR	8.687

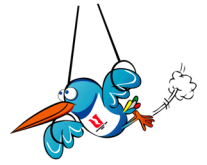
Legend:



Results

Rank	Bib	Name	NOC Code	Total
1	401	CHEN Yibing	CHN	9.662
1	424	TOMITA Hiroyuki	JPN	9.662
3	344	MORANDI Matteo	ITA	9.650
4	383	VOROBYOV Olexander	UKR	9.587
5	351	KURBANBAYEV Timur	KAZ	9.575
6	341	ANGIOLETTI Matteo	ITA	9.550
7	393	KIM Dae Eun	KOR	9.475
8	414	RODRIGUES Danny	FRA	9.425

Legend:

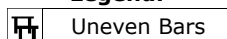


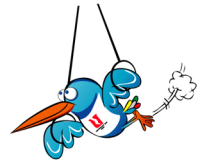
Results



Rank	Bib	Name	NOC Code	Total
1	612	TWEDDLE Elizabeth	GBR	9.587
2	702	JONG OK Han	PRK	9.537
3	712	FAN Ye	CHN	9.462
4	714	CHEN Miaojie	CHN	9.375
5	663	DOS SANTOS Daiane	BRA	9.300
6	643	SAHARA Ayaka	JPN	8.725
7	735	AZARKEVICH Olga	RUS	8.687
8	662	COMIN Camila	BRA	7.875

Legend:

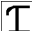


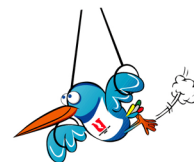


Results

Rank	Bib	Name	NOC Code	Vault 1	Vault 2	Total
1	132	HUANG Yi-Hsueh	TPE	9.637	9.450	9.543
2	406	DU Min	CHN	9.350	9.600	9.475
3	353	YERIMBETOV Yernar	KAZ	9.400	9.537	9.468
4	415	WIGNANITZ Raphael	FRA	9.625	9.262	9.443
5	225	O'NEILL Brandon	CAN	9.487	9.312	9.399
6	392	GO Jun Woong	KOR	9.600	9.175	9.387
7	191	YANEV Filip	BUL	9.475	9.162	9.318
8	382	KUVAKIN Vadym	UKR	0.000	8.825	4.412

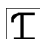
Legend:

	Vault
---	-------

**Results**

Rank	Bib	Name	NOC Code	Vault 1	Vault 2	Total
1	672	NEIJSEN Evi	NED	9.137	9.287	9.212
2	684	MAKSYUTA Valeriya	UKR	9.300	9.075	9.187
3	683	PROSKURINA Marina	UKR	9.262	9.062	9.162
4	733	ZAMOLODCHIKOVA Elena	RUS	9.312	8.950	9.131
5	701	YUN MI Kang	PRK	8.875	9.375	9.125
6	641	ISHIZAKA Manami	JPN	9.137	8.950	9.043
7	705	SUN Pyon Gwang	PRK	9.037	8.900	8.968
8	721	SKOWRONSKA Joanna	POL	9.150	8.462	8.806

Legend:

	Vault
---	-------