



MUAYTHAI

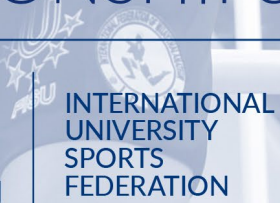
TECHNICAL HANDBOOK



FISU WORLD UNIVERSITY CHAMPIONSHIPS

DEPARTMENT
WORLD UNIVERSITY CHAMPIONSHIPS
championships@fisu.net

RELEASE DATE
MARCH 2025



INTERNATIONAL
UNIVERSITY
SPORTS
FEDERATION



TABLE OF CONTENTS

1. HISTORY	2
2. STATISTICS.....	2
3. GENERAL SCHEDULE.....	2
4. REGISTRATION PROCEDURES	2
4.1. General Entry (Deadline: -6 months to the event).....	2
4.2. Quantitative Entry (Deadline: -3 months to the event)	3
4.3. Individual Entry (Deadline: -1 month to the event)	3
5. SPORT REGULATIONS	4
5.1. Competition Events.....	4
5.2. Classification System.....	5
5.3. Delegations Composition	5
6. TECHNICAL OFFICIALS.....	6
6.1. International Technical Officials	6
6.2. National Technical Officials	7
7. SPORT MINIMUM REQUIREMENTS.....	8
7.1. Competition Venues.....	8
7.2. Training Venues.....	8
7.3. Facilities	8
7.4. Equipment	8
8. TRAININGS	9
9. MEDICAL SERVICES.....	9
10. DOPING CONTROL.....	10
11. PROTOCOL, SPORT PRESENTATION & AWARDING	11
11.1. Medals Table.....	11
11.2. Sport Presentation.....	12
11.3. Muaythai Pre-Competition Protocol.....	12
12. SERVICES	13
12.1. Ice.....	13
12.2. Laundry	13
12.3. Wi-Fi.....	13
13. GENERAL TIMELINE.....	14

1. HISTORY

Muaythai was officially incorporated into the FISU World University Championships programme in 2015. The inaugural World University Championship Muaythai was successfully held in Pattaya, Thailand, in 2018. The following edition was scheduled to take place in Nur-Sultan, Kazakhstan, in 2020; however, it was regrettably cancelled due to the Covid-19 pandemic. With the relaxation of pandemic restrictions, the second edition successfully took place in Samsun, Türkiye, in 2022.

2. STATISTICS

EDITION	YEAR	COUNTRY	CITY	COUNTRIES	ATHLETES			OFFs	TOTAL
					M	W	TOT		
1	2018	THA	Pattaya	23	73	25	98	55	153
2	2022	TUR	Samsun	15	59	25	84	33	117

3. GENERAL SCHEDULE

DAY -3	DAY -2	DAY -1	DAY 1-5	DAY 6	DAY 7
A	A	GTM / OC	C	C / CC	D

Legend: A – Arrivals / CC – Closing Ceremony / C – Competition / D – Departures / GTM – General Technical Meeting / OC – Opening Ceremony

For Muaythai, the competitions shall last 6 days

4. REGISTRATION PROCEDURES

4.1. GENERAL ENTRY (DEADLINE: -6 MONTHS TO THE EVENT)

The General Entry is the first stage of the registration process, where delegations are invited to register, through the NUSFs, for the Championship indicating a general interest in participating in the event.

Teams and athletes are not required to submit any documentation or undergo a selection processes.

The submission of a General Entry Form is non-binding, indicating only initial interest by the NUSF but not final commitment



4.2. QUANTITATIVE ENTRY (DEADLINE: -3 MONTHS TO THE EVENT)

During the Quantitative Entry the NUSF delegation commits to participate and confirms the delegation composition in terms of numbers and although it does not yet provide individual details, it requires the NUSFs to submit an accurate count of delegation members.

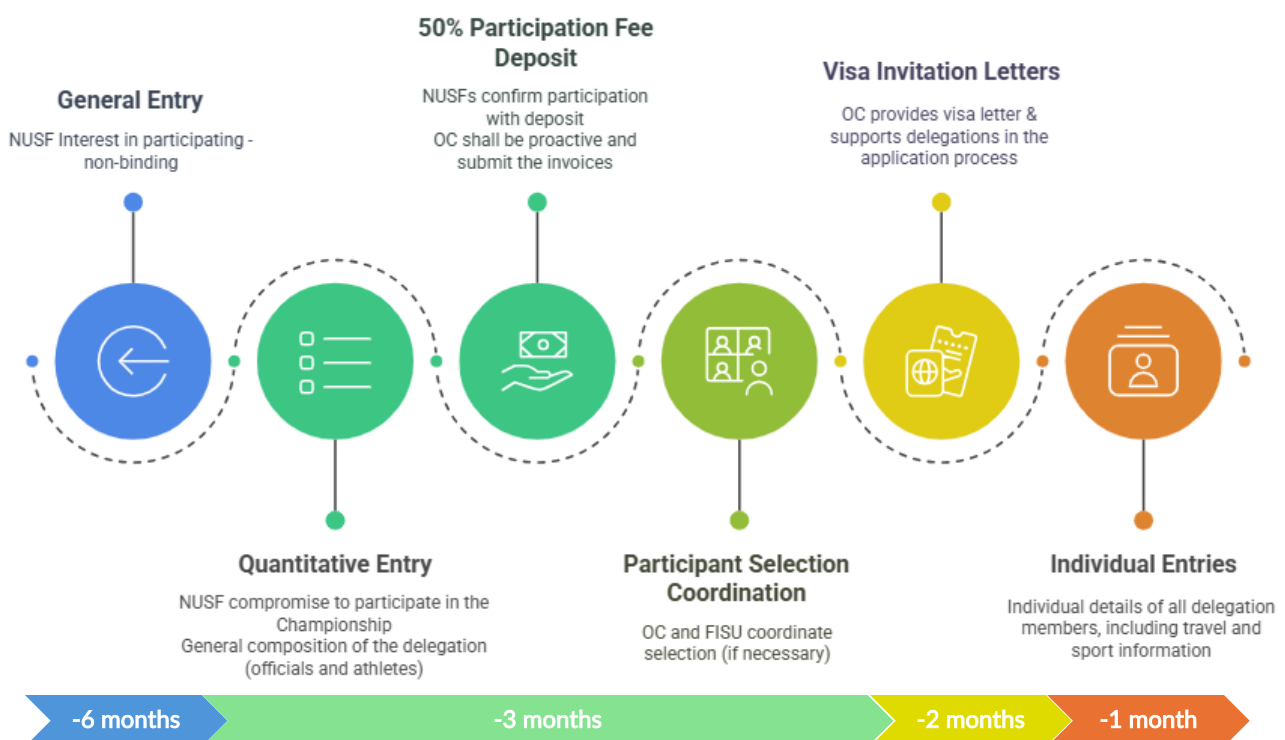
At this stage, a 50% payment of the participation fees is due and must be settled by the Quantitative Entry deadline. By proceeding with the payment, the delegation confirms its participation in the Championship.

This deposit serves as a participation guarantee, and is non-refundable in case of withdrawal, with refunds subject to FISU General Regulations and any OC-specific cancellation policies

4.3. INDIVIDUAL ENTRY (DEADLINE: -1 MONTH TO THE EVENT)

The Individual Entry is the final step in FISU event registration. The NUSF must provide all relevant data and documentation for each delegation member.

The remaining 50% of the participation fees is paid in full to the Organising Committee by this deadline. Failure to do so may result in non-participation in the Championship, unless specifically approved by the Organising Committee



5. SPORT REGULATIONS

The Muaythai competitions shall be organised in accordance with the most recent technical regulations of the International Federation of Muaythai Associations (IFMA). In case of dispute in the interpretation of the rules, the French text shall be regarded as authoritative. The most current rules and regulations can be found at <https://muaythai.sport/muaythai-rules/>.

The competitions shall last 6 days as indicated in the General Schedule (Section 3) and the competition programme shall be proposed by the Organising Committee Competition Manager and confirmed by the FISU TCC, including the following events:

5.1. COMPETITION EVENTS

MEN's	WOMEN's
FREESTYLE	FREESTYLE
-57Kg	-45Kg
-63.5Kg	-48Kg
-67Kg	-51Kg
-71Kg	-54Kg
-75Kg	-57Kg
-81Kg	-60Kg
-86Kg	-63.5Kg
Wai Kru	Wai Kru
Mixed Team Mai Muay	

A. Weigh-Ins

- Competition Weigh-In – Each morning during the competition. Weight records are maintained and controlled on the IFMALIVE license & e-boxer book system.

B. Medical Examination

Each day of the competition, the athlete must be declared fit to compete by the doctor appointed by the Organising Committee immediately prior to weighing in. Daily pre-competition medical examination results are recorded on the IFMALIVE license & e-boxer book system.

C. Contests

A winner must be declared in all tournaments. If, at the conclusion of a contest, a judge determines that the athletes have equal total scores, the judge shall establish a winner by applying the Steps for Awarding Points throughout the entirety of the contest.

If the athletes are level in both scoring Muaythai skill and the effectiveness of their Muaythai techniques, an athlete may win the round by demonstrating one or more of the following:

- Less fatigue or fewer bruises than their opponent
- Greater willingness to take the initiative or a more aggressive intent to compete than their opponent
- Superior defensive skills, effectively blocking or evading the opponent's Muaythai techniques
- More refined Muaythai style than their opponent
- Fewer rule infringements than their opponent



The duration of each bout shall consist of three rounds, each lasting three minutes, for both male and female competitors. A complete rest period of one minute shall be provided between rounds

An athlete must not compete in more than three contests in a single day. Furthermore, athletes must be afforded a minimum break of two hours between contests

5.2. CLASSIFICATION SYSTEM

All weight categories will be conducted using a single-elimination format, regardless of the number of athletes in each category.

There will be no third-place playoff. Therefore, in weight categories with four or more athletes, two bronze medals will be awarded

A. Team Ranking

The Team Ranking Award will be bestowed upon the top three teams overall, with individual awards for the best men's team and the best women's team. Athletes earn points for their respective teams based on the placement outlined below:

CONDITION	POINTS
Winner of the Final bout	3 points
Winner of a Semifinal	2 points
Winner of any bout	1 point

The points system is not cumulative for a single bout, meaning that the winner of the semifinal or final will only receive the points for that specific bout, and not any additional points for 'winning any bout' condition

B. Tie-Breaker Criteria

In the event that two or more teams achieve the same total number of points, the ranking shall be determined as follows:

- The team with the greater number of gold medals will be ranked higher
- If still tied, the team with the greater number of silver medals will be ranked higher
- If the tie persists, the team with the greater number of bronze medals will be ranked higher
- Should a tie remain after applying the above criteria, the teams shall share the same ranking

5.3. DELEGATIONS COMPOSITION

A. Athletes

EVENTS	MEN's	WOMEN's
Combat Weight Categories	Max. 1 athlete per category	Max. 1 athlete per category
Cultural Individual Categories	Max. 1 athlete for WK	Max. 1 athlete for WK
Cultural Team Event	Max. 1 team (either Men, Women or Mixed) per delegation	
Max. 16 individual athletes (8 men & 8 women) & 1 Team (Duo) per delegation		

All participating athletes must have a valid IFMA License & e-boxer book via IFMA's Registration System ifmalive.com

The Wai Kru and Mai Muay competitions are contests held in either Individual (Wai Kru) or Duo (Mai Muay) formats. Each national team may enter only 1 athlete per division in the individual contest and 1 team, consisting of 2 athletes, per division in the duo contest. An athlete may only participate in one of the two cultural competition formats

An athlete may compete in either the Wai Kru or Mai Muay competition, provided they are registered to compete in a combat weight category

At the Technical Meeting, the Head of Delegation or his/her representative shall confirm and sign the official list of competitors accredited by the CIC

B. Officials

TOTAL NUMBER OF ATHLETES	TOTAL NUMBER OF OFFICIALS
1 athlete	Max. 1 official
2 to 5 athletes	Max. 2 officials
6 to 10 athletes	Max. 3 officials
10 to 14 athletes	Max. 4 officials

C. Equipment

According to the IFMA Rules and Regulations, competitors must wear the official IFMA 2026 UWC uniform, consisting of red or blue shorts and a tank top, in accordance with their designated corner. The uniform must be purchased from IFMA during the Team Manager meeting, and includes two tops (one red and one blue), one pair of Muay Thai shorts, and one pair of hand wraps.

Contestants are required to wear a Mongkon (sacred headband) during the Wai Kru ceremony before the fight. An amulet may be worn around the upper arm or wrist, but it must be neatly covered. Additionally, contestants must wear the standard headgear, gloves, shin guards, and elbow guards provided by the Organising Committee; no substitutions are allowed. Contestants must also supply their own groin guards (for both males and females), breast protection (for females only), and gum shields. Furthermore, toenails must be kept short, and beards must be clean-shaven.

The traditional Muaythai musical instruments (java pipe, small cymbals and two drums) will accompany the ritual. If a live band is not available, it is permissible to use Muaythai music played from a recording

It is the responsibility of each delegation to contact IFMA (info@muaythai.sport) regarding the sizes and quantities of the uniform sets required for their athletes

6. TECHNICAL OFFICIALS

6.1. INTERNATIONAL TECHNICAL OFFICIALS

For the FISU Championship, the ITOs are appointed by IFMA, with the endorsement of FISU. This appointment process considers several critical factors, including the number of participants, the level and availability of NTOs, and the goal to minimise expenses when possible. To achieve cost-efficiency, IFMA will aim to nominate ITOs from neighbouring countries whenever feasible. This approach not only fosters regional cooperation but also optimises resources.



A. Number & Roles of ITOs

INTERNATIONAL TECHNICAL OFFICIALS	
NUMBER	FUNCTION
3	Jury Member
2	Referee (1 per bout)
6	Judge (3 per bout)
1	Computer – Scoring System Operator
1	Timekeeper
1	Equipment Control
A total of 14 ITOs are required per ring	

B. ITOs Costs

According to the Collaboration Convention signed between FISU and IFMA, the costs of the ITOs are the following:

- IFMA shall cover:
 - Technical Delegate’s flights
 - Technical Delegate’s accommodation in single room
 - ITOs’ flights
 - ITOs’ per-diem
- Organising Committee shall cover:
 - Technical Delegate’s meals
 - Technical Delegate’s internal transportation
 - ITOs’ accommodation
 - ITOs’ meals
 - ITOs’ internal transportation

6.2. NATIONAL TECHNICAL OFFICIALS

Concerning the NTOs, these individuals are appointed by the Muaythai National Federation or the appropriate governing bodies within a country, under the supervision of the Organising Committee.

A. Number & Roles of NTOs

NATIONAL TECHNICAL OFFICIALS	
NUMBER	FUNCTION
2	Referee (1 per bout)
6	Judge (3 per bout)
1	Computer – Scoring System Operator Assistant
2	Timekeepers
2	Equipment Check
A total of 13 NTOs are required	

B. Agreement with the NF

Concerning the NTOs participation, it falls outside the scope of FISU or IFMA. It is therefore advisable for the Organising Committee to reach an agreement directly with the National Federation. This collaboration will help ensure clarity and alignment on the financial aspects associated with it, including the following:

- NTOs Nomination – Ensure all NTOs possess the necessary qualifications to work in an international event
- Management and distribution of the technical official's clothing/uniforms
- Arrangement of suitable accommodation for the required period, if needed

It is strongly recommended to initiate communication with the National Federation promptly regarding the appointment of these officials. This proactive approach will help avert any potential personnel shortages that may arise from conflicting event dates, thereby expanding the available options and ensuring a more successful engagement

7. SPORT MINIMUM REQUIREMENTS

7.1. COMPETITION VENUES

- Number of competition venues – 1
- Type of venues – Indoor or Outdoor (if the weather permits)
 - Rings – min. 2
 - Area – min. 14m x 14m / max. 16m x 16m
- Lighting – min. 1.500 lux

7.2. TRAINING VENUES

- Number of training venues – 1
- Type of venue – Indoor or Outdoor (if the weather permits)
 - Rings – 1
 - Separate from the competition venue

7.3. FACILITIES

- Weigh-in room – 2
 - Official weigh-in – 1
 - Training weigh-in – 1 (preferably at the accommodation venue)

7.4. EQUIPMENT

A. Venue Equipment

- Sound system – PA
- 50” screens – 2 per ring
- Bell – 1 per ring
- Protest cameras – min. 1 per ring
- Scoring System (IFMALIVE)



- 50 MB speed stable internet Wi-Fi dedicated to the scoring system
- 220v electric supplies to each side of the ring
- 7 tablets and 2 laptops with their chargers for each ring
- 1 printer
- 2 LCD monitors in each corner of each ring to display the scores
- 1 Smart TV in the warm-up area that will show the upcoming bouts

B. Uniforms & Sport Equipment

- Headgear
- Gloves
- Hand wraps
- Shin guards
- Elbow guards

C. Weigh-In & Medical Check Equipment

- Stable internet Wi-Fi
- Calibrated digital scales – 3

Please refer to the [Minimum Requirements document](#) for more detailed information

8. TRAININGS

The Organising Committee is responsible for coordinating and communicating the training schedule to each delegation, ensuring appropriate access to facilities based on the sport and competition schedule. Some of the factors to be considered are:

- Create a training schedule based on the indications of the FISU TCC
- Consider the usage of the main competition venue, if needed and appropriate
- Provide hydration and basic medical assistance for training sessions
- Share a detailed training plan with each delegation at least 48 hours before their arrival
- Ensure training venue availability throughout the Championship

Please refer to the [Section 5.2.3 of the General Handbook](#) for more detailed information regarding Trainings

9. MEDICAL SERVICES

A. FISU Requirements

- First aid and Emergency Medical care
- Medical transportation
- OC on-call first aid medical services shall be available on a 24-hour basis
- A minimum of two ambulances per venue should be available and on duty from the start of warm-up until at least 45 minutes after the final competition of the day
- Doctors positioned ringside at each ring

The Organising Committee must provide two to three doctors who will be responsible for the competitors' daily medical examinations in the morning of each competition day, from 07:00 to 09:00

B. Participants Medical Insurance

All participants must have valid travel medical insurance, covering:

- 24/7 Emergency Assistance
- Emergency Medical Expenses
- Medical Evacuation/Repatriation
- Trip Cancellation/Interruption
- Accidental Death or Injury

The OC is solely responsible for providing first aid, emergency medical care, and transportation to the designated hospital. All other medical costs shall be borne by the participant's insurance

Refer to Section 3.4.1 of the General Handbook for more detailed information regarding Medical Services

10. DOPING CONTROL

A. FISU Requirements

- The requirements regarding the number and type of doping tests, as well as the total number of tests to be conducted, can be found in the *FISU Doping Test Requirements* document. This information is available exclusively to the Organising Committee.
- The OC Doctor or Head of the Medical area shall coordinate the doping testing and contact the FISU CMI to clarify the moment or disciplines in which the tests will be carried out.
- All doping tests costs (including collection, transportation, laboratory analyses) shall be borne by the Organising Committee.

B. Athletes Selection

- Athletes are eligible for testing once accredited until departing from the official event accommodation.

Please refer to Section 3.4.2 of the General Handbook for more detailed information regarding Doping Control



11. PROTOCOL, SPORT PRESENTATION & AWARDING

11.1. MEDALS TABLE

MUAYTHAI							
WEIGHT CATEGORIES		MEN			WOMEN		
MEN	WOMEN	G	S	B	G	S	B
-57Kg	-45Kg	1	1	2	1	1	2
-63.5Kg	-48Kg	1	1	2	1	1	2
-67Kg	-51Kg	1	1	2	1	1	2
-71Kg	-54Kg	1	1	2	1	1	2
-75Kg	-57Kg	1	1	2	1	1	2
-81Kg	-60Kg	1	1	2	1	1	2
-86Kg	-63.5Kg	1	1	2	1	1	2
TOTAL		7	7	14	7	7	14

A. FISU Requirements

The Organising Committee is responsible for providing the medals as shown in the table above. Medals must be awarded for all categories. The top 3 athletes in each category are eligible for medals.

As there will be no play-off for the bronze medal, both semi-final losers will be awarded bronze medals

The table below provides a comprehensive overview of the total number of medals awarded across all competition disciplines. Please note that extra/reserve medal sets and the FISU set are not included in these figures.

MUAYTHAI MEDALS	
Gold	14
Silver	14
Bronze	28

The Organising Committee must provide FISU with a set of medals of the event

B. Recommendations & Considerations

It is crucial to have additional sets of medals on hand as a contingency. Some medals may be defective and may need to be replaced.

A trophy should be awarded for the top ranked team in Team Ranking

Medals are not mandatory for Officials in Muaythai

11.2. SPORT PRESENTATION

Sports presentation is vital for elevating a Championship from a competition to an unforgettable experience. It encompasses everything from music and lighting to commentary and fan engagement, creating a unique atmosphere that engages the audience.

In case there is a big screen in the venue for the spectators, some educational video (provided by IFMA) regarding the rules of the sport can be displayed at the beginning of the competition day

A. FISU Requirements

- **Audio Elements**
 - Sound System: A high-quality sound system is essential for announcements, music, and commentary, ensuring clear communication and an engaging atmosphere.
 - Microphone: Essential for general announcements such as schedule, results, athletes introduction, general information, and others.
 - Thematic Music: Curate an energetic playlist to be played during introductions, warm-ups, and medal ceremonies to elevate the excitement.
- **Commentary and Announcing**
 - Live Announcements: Make timely announcements regarding event schedules, combat results, and athlete backgrounds to keep the audience informed and engaged.
- **Athletes Introduction**
 - Ceremonial Introductions: Develop exciting and personalised introductions for the athletes, showcasing their achievements and backgrounds.

B. Recommendations & Considerations

- **Audio Elements**
 - DJ: Enhances the atmosphere and overall experience of a sports competition, by creating and maintaining energy, motivating the athletes and engaging the crowd, only when no bouts are taking place.
- **Commentary and Announcing**
 - Engaging Commentary: Hire knowledgeable commentators who can provide insights about the athletes, techniques, and race strategies. This adds depth to the viewing experience.

11.3. MUAYTHAI PRE-COMPETITION PROTOCOL

A. Athletes Introduction

Event Host:

“Now, let's introduce our contenders for the [men's/women's/teams] Championship! Please join me in welcoming our athletes with enthusiasm!”

- Country Flag Display (if any big screen available)
 - “Representing [Country], we have [Athlete's Name]!”
 - “[He/She] recently finished [insert notable performance], and holds a personal best of [insert time, if available].”
 - “Notably, [he/she] has also won [mention any major titles or accolades, such as national championships].”



12. SERVICES

The Organising Committee should provide a variety of services for the event, including:

- Ice
- Laundry
- Wi-Fi

12.1. ICE

The supply of ice is one of the most common requests from participating delegations, particularly for injury treatment and recovery purposes.

- The Organising Committee must supply ice for treating injuries during both practice and competition, as part of the medical coverage for the event. It does not cover large quantities of ice needed for recovery treatments, such as cryotherapy.

The Organising Committee should secure a reliable ice provider on standby, anticipating the request from teams and establishing clear procedures for ice procurement, including pricing and how to access this service

12.2. LAUNDRY

Laundry services are essential for many sports, particularly in long-duration competitions and team sports, where athletes may require frequent changes of clothing.

- Laundry services must be provided in all Team Sports Championships and in all sports with more than four competition days.
- Self-Service or Full-Service Laundry can be considered (hotel/accommodation and external services included in the latter)

Self-Service is the preferred option, giving more flexibility and control to the teams. If not, it is important to negotiate reduced pricing and adjust the timing for collection/delivery of uniforms with the provider

12.3. WI-FI

Wi-Fi is an essential service for university students, as it serves as a critical infrastructure that fosters communication and supports their academic responsibilities.

- Participants can easily access real-time information about event schedules, results, and updates. This allows them to plan their day effectively, ensuring they don't miss out on key events and activities.
- Participants can engage with live broadcasts, social media updates, and other digital content related to the event.
- For many students, academic responsibilities continue even during events. Wi-Fi connection ensures they can access study materials and educational resources, maintain communication with professors, and keep up with online courses.

Wi-Fi should be provided free of charge for all participants at the event, both at the accommodation sites and at the competition venues

Please refer to the Section 3.11 of the General Handbook for more detailed information on all services

13. GENERAL TIMELINE

TIMELINE	ACTIONS
Event -12 months	<ul style="list-style-type: none"> • Coordination Visit <ul style="list-style-type: none"> ◦ Venues visit and Equipment approval (FISU TCC) • Competition programme approval (FISU TCC) • Venue medical plan approval (FISU TCC)
Event -6 months	<ul style="list-style-type: none"> • General Entries (NUSFs)
Event -3 months	<ul style="list-style-type: none"> • Quantitative Entries (NUSFs) • 50% payment from participating countries (NUSFs / OC) • ITOs & NTOs list (FISU / IFMA)
Event -1 months	<ul style="list-style-type: none"> • Individual Entries (NUSFs) • 100% payment from participating countries (NUSFs / OC) • Final Bulletin (OC / FISU / FISU TCC)
Event -1 day	<ul style="list-style-type: none"> • Accreditation and participants list confirmation (NUSFs) • Technical Officials Meeting (ITOs / NTOs / TCC / OC) • General Technical Meeting (NUSFs / OC / FISU)
EVENT	
Event +1 week	<ul style="list-style-type: none"> • Send all documents and media to FISU (OC)
Event +1 month	<ul style="list-style-type: none"> • Final Report to FISU (OC)

FISU WORLD UNIVERSITY CHAMPIONSHIPS MUAYTHAI TECHNICAL HANDBOOK

PUBLISHED BY



CONTACT

WORLD UNIVERSITY CHAMPIONSHIPS
DEPARTMENT
championships@fsu.net

This document is not
for public distribution and remains
the property of FISU

