



GOLF

TECHNICAL HANDBOOK

FISU WORLD UNIVERSITY CHAMPIONSHIPS



DEPARTMENT
WORLD UNIVERSITY CHAMPIONSHIPS
championships@fisu.net

RELEASE DATE
MARCH 2025



INTERNATIONAL
UNIVERSITY
SPORTS
FEDERATION



TABLE OF CONTENTS

1. HISTORY	2
2. STATISTICS.....	3
3. GENERAL SCHEDULE.....	3
4. REGISTRATION PROCEDURES	4
4.1. General Entry (Deadline: -6 months to the event).....	4
4.2. Quantitative Entry (Deadline: -3 months to the event)	4
4.3. Individual Entry (Deadline: -1 month to the event)	5
5. SPORT REGULATIONS	5
5.1. Competition Events.....	5
5.2. Competition Format.....	6
5.3. Classification System.....	7
5.4. Delegations Composition.....	8
6. TECHNICAL OFFICIALS.....	9
6.1. International Technical Officials	9
6.2. National Technical Officials	9
7. SPORT MINIMUM REQUIREMENTS.....	10
7.1. Competition Venues.....	10
7.2. Training Venues.....	10
7.3. Equipment	10
8. TRAININGS	11
9. MEDICAL SERVICES.....	11
10. DOPING CONTROL.....	12
11. PROTOCOL, SPORT PRESENTATION & AWARDING	12
11.1. Medals Table.....	12
11.2. Sport Presentation.....	13
12. SERVICES	13
12.1. Ice.....	13
12.2. Laundry	14
12.3. Wi-Fi.....	14
13. GENERAL TIMELINE.....	15

1. HISTORY

Often regarded as an elite and prestigious sport, golf has experienced a notable surge in popularity among university student-athletes in recent years. Its growing appeal is reflected not only in participation rates but also in the increasing calibre of competitors representing universities worldwide.

The journey of golf within the realm of university sports took a significant step forward in 1984 during a visit to Sardinia, Italy, by the then-FISU President, Dr Primo Nebiolo. During this visit, he proposed the inclusion of golf in the portfolio of sports organised by National University Sports Federations (NUSFs), recognising its potential to elevate the profile of university competitions.

Two years later, in October 1986, the inaugural World University Championship Golf was held in Cagliari, on the picturesque island of Sardinia. This historic event was hosted by the renowned Is Molas Golf Club, which had previously gained international recognition for hosting the Italian Open in 1976. The course's challenging layout allowed both FISU officials and spectators to gauge the high calibre of the participating athletes, many of whom boasted impressive amateur records. At that time, the championship attracted a formidable line-up of competitors, including Ko Cockerill from the United States, who became the first World University champion and also secured the first US women's championship in 1986. Italy's Marco Durante, a notable figure in amateur golf, also made a memorable appearance, having previously won the Orange Bowl in 1979.

Throughout its history, the World University Championship Golf has been hosted on some of the most stunning and prestigious golf courses across the globe. Past editions have taken place in La Grande-Motte, France; Palma de Mallorca and San Lorenzo, Spain; and Lausanne, Switzerland. One particularly remarkable event was hosted at the San Lameer Golf Club in South Africa. Known for its breathtaking scenery and challenging layout, the course saw exceptional performances, with a select few players completing rounds in fewer than 70 strokes on a par 72 course. Notably, Taipei's Wei Yun-Jie shot a remarkable 68, while American player Jones and South Africa's Albert finished with 69 strokes. The tournament also featured participation from Bubba Watson, who has since become a multiple Major winner, claiming victories at the Masters Tournament in 2012 and 2014.

Additional distinguished venues that have hosted the championship include Sun City in South Africa, Mission Hills in Shenzhen, China, as part of the Summer Games, and Crans-Montana in Switzerland. These venues underscore the event's reputation for combining world-class golf with extraordinary settings. The World University Championship Golf has consistently maintained its status as a premier event, not only among amateur golf tournaments worldwide but also within the broader spectrum of FISU competitions.

The 2010 edition, hosted by the Spanish University Sport Federation (CEDU) at the Antequera course in Málaga, was particularly successful, setting a record for participation with 135 golfers. This record was subsequently surpassed in 2012 when Liberec, Czech Republic, hosted 146 competitors. However, the largest field to date was at the 2011 Summer Games in Shenzhen, China, where golf was included as an optional sport. A total of 157 golfers from 30 countries competed, highlighting the sport's global appeal.

Among the notable champions is Hideki Matsuyama from Japan, who won the Men's Individual title at the 2011 Summer Games with a score of 19 under par. Matsuyama turned professional in 2013 and has since achieved significant success on the PGA Tour, including victories at the Memorial Tournament in January 2014.

The 2022 edition was held in Torino, Italy, featuring 90 athletes from 18 countries and the most recent one took place in Kuortane-Seinäjoki, Finland.



2. STATISTICS

EDITION	YEAR	COUNTRY	CITY	COUNTRIES	ATHLETES			OFFs	TOTAL
					M	W	TOT		
1	1986	ITA	Cagliari	7	38	15	53	15	68
2	1988	ITA	Cagliari	9	47	15	62	16	78
3	1990	FRA	La Grande-Motte	14	56	23	79	17	96
4	1992	ESP	Palma de Maiorca	14	56	35	91	39	130
5	1994	ESP	San Lorenzo	15	59	32	91	31	122
6	1996	SUI	Lausanne	21	82	47	129	38	167
7	1998	RSA	San Lameer	13	65	36	101	28	129
8	2000	GBR	Coleraine	15	61	37	98	35	133
9	2002	TPE	Taoyuan	13	61	34	95	29	124
10	2004	THA	Nakhon Ratchasima	14	60	36	96	41	137
11	2006	ITA	Torino	17	73	53	126	48	174
12	2008	RSA	Sun City	18	68	44	112	48	160
13	2010	ESP	Málaga	21	82	53	135	60	195
14	2012	CZE	Liberec	19	89	57	146	57	203
15	2014	SUI	Crans-Montana	22	71	62	133	62	195
16	2016	FRA	Brive-la-Gaillarde	18	42	34	76	36	112
17	2018	PHI	Lubao Pampanga	13	36	30	66	30	96
18	2022	ITA	Torino	18	49	41	90	45	135
19	2024	FIN	Kuortane-Seinäjoki	20	46	41	87	39	126

3. GENERAL SCHEDULE

DAY -3	DAY -2	DAY -1	DAY 1-3	DAY 4	DAY 5
A	A	GTM / OC	C	C / CC	D

Legend: A – Arrivals / CC – Closing Ceremony / C – Competition / D – Departures / GTM – General Technical Meeting / OC – Opening Ceremony

For Golf, the competitions shall last 4 days



4. REGISTRATION PROCEDURES

4.1. GENERAL ENTRY (DEADLINE: -6 MONTHS TO THE EVENT)

The General Entry is the first stage of the registration process, where delegations are invited to register, through the NUSFs, for the Championship indicating a general interest in participating in the event.

Teams and athletes are not required to submit any documentation or undergo a selection processes.

The submission of a General Entry Form is non-binding, indicating only initial interest by the NUSF but not final commitment

4.2. QUANTITATIVE ENTRY (DEADLINE: -3 MONTHS TO THE EVENT)

During the Quantitative Entry the NUSF delegation commits to participate and confirms the delegation composition in terms of numbers and although it does not yet provide individual details, it requires the NUSFs to submit an accurate count of delegation members.

At this stage, a 50% payment of the participation fees is due and must be settled by the Quantitative Entry deadline. By proceeding with the payment, the delegation confirms its participation in the Championship.

This deposit serves as a participation guarantee, and is non-refundable in case of withdrawal, with refunds subject to FISU General Regulations and any OC-specific cancellation policies

A. Participants Selection

In the event of receiving more registrations than the number of spots available for a category or competition, FISU Championships Department will coordinate the participants selection two months before the Championship following the below criteria:

- a) Host country
- b) Next host
- c) Quantitative entries 50% payment
- d) National and/or Continental distribution and representativity

If an athlete is not selected, his/her deposit will be reimbursed

B. Draw

The FISU Technical Committee Chair (TCC) will conduct a draw for the 1st and 2nd rounds once all participating countries have registered.

This draw aims to balance starting times between early and late slots, as well as between the 1st and 10th tees over the initial two rounds. Whenever possible, players from each country will be grouped together in a block, with one player assigned to each consecutive time slot.

For the 3rd and 4th rounds, the draw will be done according to the team's cumulative score at the end of the previous round, with the leaders (lowest cumulative scores) teeing off last from the 1st tee. The draw for the 4th round will also consider individual results.

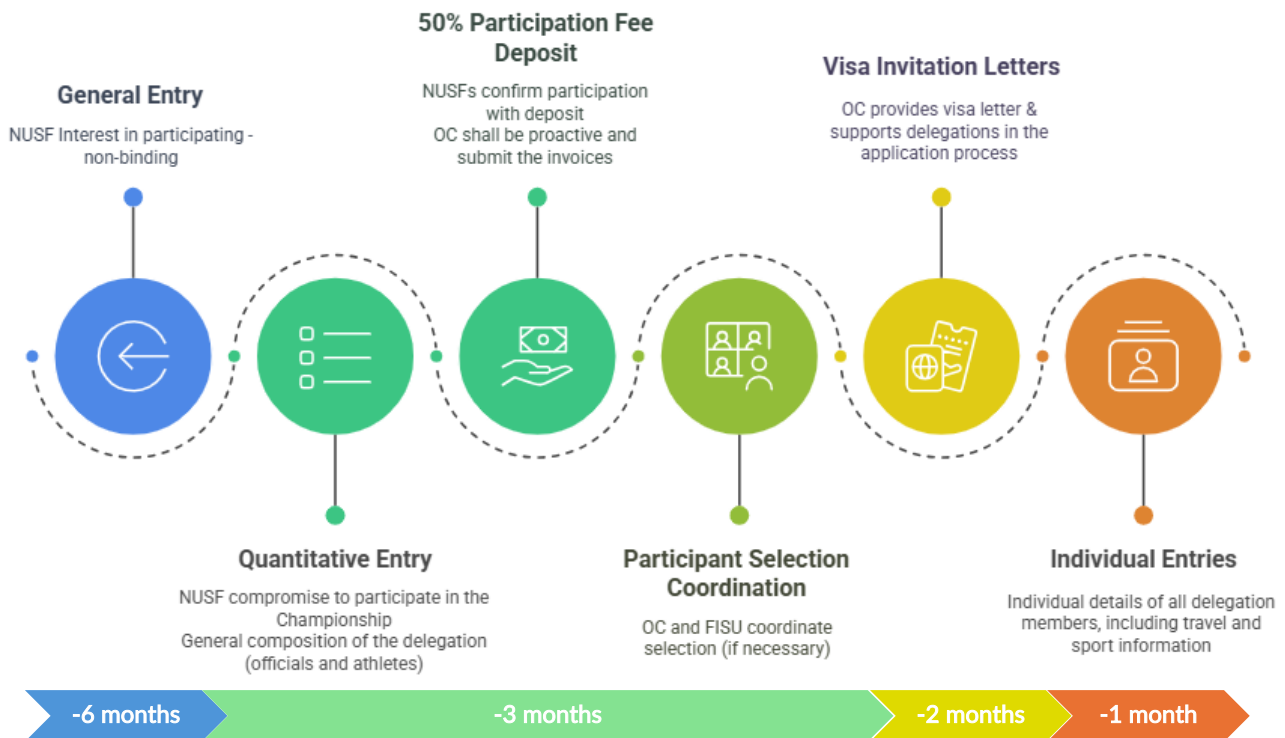
Under no circumstances will players from the same country be scheduled to play in the same group



4.3. INDIVIDUAL ENTRY (DEADLINE: -1 MONTH TO THE EVENT)

The Individual Entry is the final step in FISU event registration. The NUSF must provide all relevant data and documentation for each delegation member.

The remaining 50% of the participation fees is paid in full to the Organising Committee by this deadline. Failure to do so may result in non-participation in the Championship, unless specifically approved by the Organising Committee



5. SPORT REGULATIONS

The Golf tournaments shall be organised in accordance with the most recent Rules of Golf, as approved by the R&A Rules Limited, the United States Golf Association and in accordance with the local rules approved by the FISU Technical Committee Chair. In case of dispute in the interpretation of the rules, the English text shall be regarded as authoritative.

The competitions shall last 4 days as indicated in the General Schedule (Section 3) and the competition programme shall be proposed by the Organising Committee Competition Manager and confirmed by the FISU TCC, including the following events:

5.1. COMPETITION EVENTS

EVENTS	MEN's	WOMEN's
Tournaments	Individual	Individual
	Team	Team
	Mixed Team	

A. Minimum of 36 Holes

Under no circumstances will the Championship be extended beyond the fourth day. The winner will be the Team or Individual with the lowest aggregate score over the stipulated rounds played. However, if it proves impossible to complete at least 36 holes, the Championship will be abandoned without a Champion being declared.

B. Practice Rounds

Practice round schedules will be allocated by the Organising Committee with the approval of the FISU Technical Committee Chair; requests for specific times or courses will not be considered. Teams missing their designated practice round times will not be permitted to play at an alternative time unless there are exceptional circumstances, which must be approved by the Organising Committee in advance. Please be advised that travel on practice round days will not be regarded as an exceptional circumstance. Additionally, if adverse weather causes a delay or cancellation of a practice round, that round will not be rescheduled.

5.2. COMPETITION FORMAT

The tournaments will be contested over 72 holes of stroke play, with 18 holes played each day over four consecutive days.

All players must be amateur golfers in accordance with the Rules of Amateur Status of R&A Rules Limited and the United States Golf Association. Additionally, they must have a handicap of nine or less when entering the World University Championship.

A. Pace of Play (Rule 5.6)

Each hole has been allocated a maximum completion time based on its length and difficulty. The total maximum time allowed for completing all 18 holes will be available prior to play from the Championship Office. The Pace of Play Policy will be strictly enforced.

Penalties for Breach of Policy:

- One bad time – Verbal warning; players will be advised that any subsequent breach will incur a penalty
- Two bad times – One Stroke Penalty
- Three bad times – Additional Two Stroke Penalty
- Four bad times – Disqualification

B. Suspension of Play (Rule 5.7)

The following signals will be used to suspend and resume play:

- Immediate stop (imminent danger) – One prolonged note of siren
- Stop for non-dangerous reasons – Three consecutive notes of siren
- Resumption of play – Two consecutive notes of siren

When play is stopped due to imminent danger, all practice areas must be immediately closed

A weather monitoring service must be provided by the Organising Committee

C. Advice

Model Local Rule H-2, "Appointment of Advice Giver in Team Competitions" (Rule 24.4a), is not in effect.

D. Transportation

Model Local Rule G-6 from the Official Guide to the Rules of Golf is in effect.



E. Behaviour

Players must adhere to the standards of conduct outlined in Rule 1.2a of the Rules of Golf. Please be aware that the Organising Committee reserves the right to disqualify any player for serious misconduct under this rule.

F. Disqualification Penalties and Withdrawals

Disqualification for breaches of the Rules or the Terms of the team event applies only to the round in which the breach occurred unless the Championship Committee decides otherwise. Similarly, a player who withdraws from one round may re-enter for subsequent rounds unless the Committee determines otherwise.

5.3. CLASSIFICATION SYSTEM

A. Tiebreakers

Team Event

In the event of a tie for any medal position after four rounds, the outcome will be decided as follows:

- a. Non-counting score for the 4th round
- b. If still tied, non-counting score for the 3rd round
- c. If still tied, non-counting score for the 2nd round
- d. If still tied, non-counting score for the 1st round
- e. If still tied, joint winners will be declared

If fewer than four rounds are completed, step (a) does not apply; if fewer than three rounds are completed, steps (a) and (b) do not apply. In all cases, a team submitting a non-counting score will be ranked higher than one that does not submit a score (e.g., due to disqualification, withdrawal, or having only two players)

Individual Event

In the event of a tie for any medal position after four rounds, a hole-by-hole play-off will immediately follow the final round to determine the medals. Other tied players will remain tied. The play-off will commence on a set sequence of holes, approved by the FISU Technical Committee Chair and communicated prior to the start of the competition.

- For two players tied for first place – a play-off will determine gold and silver medals
- For three or more players tied for first – a play-off will determine gold, silver, and bronze medals
- For ties on second or third place – a play-off will determine the respective medals

Only one gold, one silver, and one bronze medal will be awarded. After each play-off hole, players will be grouped according to their scores on that hole if additional holes are required

Mixed Team Event

The Mixed Team Event will comprise four players per country, with two men and two women. The top three scores from each team will be used to calculate the team's score each round, with each gender required to record at least one score per round.

Teams may consist of three players; in this case, all scores will count, and both genders must be represented

In the event of a tie for any medal position after four rounds, the outcome will be decided as follows:

- Non-counting score for the 4th round
- If still tied, non-counting score for the 3rd round
- If still tied, non-counting score for the 2nd round
- If still tied, non-counting score for the 1st round
- If still tied, joint winners will be declared

If fewer than four rounds are completed, step (a) does not apply; if fewer than three rounds are completed, steps (a) and (b) do not apply. In all cases, a team submitting a non-counting score will be ranked higher than one that does not submit a score (e.g., due to disqualification, withdrawal, or having only two players)

B. Returning of Score Cards

The player's scorecard is officially returned to the Committee fifteen minutes after it has been accepted into the electronic system. Exceptions apply as outlined in the notice "Return of Scorecard," which will be available from the Championship Office.

5.4. DELEGATIONS COMPOSITION

A. Athletes

TOURNAMENT	MEN's	WOMEN's
Individual	Max. 3 athletes	Max. 3 athletes
Team	Two best results each day shall count for team classification	
Mixed Team	Max. 1 team (2 men + 2 women)	
Max. 6 athletes (3 men & 3 women) per delegation		

All participating players and coaches will require a IGF license as a condition of entry

The players' handicaps must be verified by their national associations at registration. Players with positive handicaps (better than 0) will have a '+' sign placed in front of their handicap number

At the Technical Meeting, the Head of Delegation or his/her representative shall confirm and sign the official list of competitors accredited by the CIC

B. Officials

TOTAL NUMBER OF OFFICIALS
Max. 5 officials per delegation



6. TECHNICAL OFFICIALS

6.1. INTERNATIONAL TECHNICAL OFFICIALS

For the FISU Championship, the ITOs are appointed by IGF, with the endorsement of FISU. This appointment process considers several critical factors, including the number of participants, the level and availability of NTOs, and the goal to minimise expenses when possible. To achieve cost-efficiency, IGF will aim to nominate ITOs from neighbouring countries whenever feasible. This approach not only fosters regional cooperation but also optimises resources.

A. Number & Roles of ITOs

INTERNATIONAL TECHNICAL OFFICIALS	
NUMBER	FUNCTION
1	Chief Referee
3	Rovers and Course Set-Up Referees
1	Tournament Administrator
A total of 5 ITOs are required	

B. ITOs Costs

According to the Collaboration Convention signed between FISU and IGF, the costs of the ITOs are the following:

- Organising Committee shall cover:
 - Technical Delegate's flights
 - Technical Delegate's accommodation in single room
 - Technical Delegate's meals
 - Technical Delegate's internal transportation
 - ITOs' flights
 - ITOs' accommodation in single rooms
 - ITOs' meals
 - ITOs' per-diem
 - ITOs' internal transportation

6.2. NATIONAL TECHNICAL OFFICIALS

Concerning the NTOs, these individuals are appointed by the Golf National Federation or the appropriate governing bodies within a country, under the supervision of the Organising Committee.

A. Number & Roles of NTOs

NATIONAL TECHNICAL OFFICIALS	
NUMBER	FUNCTION
7	Referees
1	Tournament Administrator
2	Starters
2	Recorders
A total of 12 NTOs are required	



B. Agreement with the NF

Concerning the NTOs participation, it falls outside the scope of FISU or IGF. It is therefore advisable for the Organising Committee to reach an agreement directly with the National Federation. This collaboration will help ensure clarity and alignment on the financial aspects associated with it, including the following:

- NTOs Nomination – Ensure all NTOs possess the necessary qualifications (including speaking English) to work in an international event
- Management and distribution of the technical official's clothing/uniforms
- Arrangement of suitable accommodation for the required period, if needed

It is strongly recommended to initiate communication with the National Federation promptly regarding the appointment of these officials. This proactive approach will help avert any potential personnel shortages that may arise from conflicting event dates, thereby expanding the available options and ensuring a more successful engagement

7. SPORT MINIMUM REQUIREMENTS

7.1. COMPETITION VENUES

- Number of competition venues – 1
- Type of venue - Outdoor
 - 18 holes – Championship level course
 - Size – at least 6.500m

7.2. TRAINING VENUES

- Number of training venues – 1
 - 30-bay turfed driving range – min. 300 yards long

7.3. EQUIPMENT

A. Venue Equipment

- Golfbox Scoring
- Practice balls
- Pull trolleys – free of charge
- Motorised golfcarts

Please refer to the Minimum Requirements document for more detailed information

B. Uniforms & Sport Equipment

- Model Local Rules G-1, G-2 and G-3, as outlined in the Official Guide to the Rules of Golf, are in effect concerning conforming driver heads, groove and punch mark specifications, and conforming golf balls.
- Distance-measuring devices are permitted in accordance with Rule 4.3a(1) of the Rules of Golf.
- Armbands for team captains



It is strongly recommended that any player unsure whether their equipment complies with these Local Rules consults with the Championship Committee. Such consultation should be made as early as possible before the Championship

Conforming equipment lists are available at: <https://www.randa.org/exlore-equipment>

8. TRAININGS

The Organising Committee is responsible for coordinating and communicating the training schedule to each delegation, ensuring appropriate access to facilities based on the sport and competition schedule. Some of the factors to be considered are:

- Create a training schedule based on the indications of the FISU TCC
- Consider the usage of the main competition venue, if needed and appropriate
- Provide hydration and basic medical assistance for training sessions
- Share a detailed training plan with each delegation at least 48 hours before their arrival
- Ensure training venue availability throughout the Championship

Players are entitled to a maximum of two practice rounds. The course is closed on the day of arrival

Please refer to the Section 5.2.3 of the General Handbook for more detailed information regarding Trainings

9. MEDICAL SERVICES

A. FISU Requirements

- First aid and Emergency Medical care
- Medical transportation
- OC on-call first aid medical services shall be available on a 24-hour basis
- A minimum of two ambulances per venue should be available and on duty from the start of warm-up until at least 45 minutes after the final competition of the day

B. Participants Medical Insurance

All participants must have valid travel medical insurance, covering:

- 24/7 Emergency Assistance
- Emergency Medical Expenses
- Medical Evacuation/Repatriation
- Trip Cancellation/Interruption
- Accidental Death or Injury

The OC is solely responsible for providing first aid, emergency medical care, and transportation to the designated hospital. All other medical costs shall be borne by the participant's insurance

Refer to Section 3.4.1 of the General Handbook for more detailed information regarding Medical Services

10. DOPING CONTROL

A. FISU Requirements

- The requirements regarding the number and type of doping tests, as well as the total number of tests to be conducted, can be found in the *FISU Doping Test Requirements* document. This information is available exclusively to the Organising Committee.
- The OC Doctor or Head of the Medical area shall coordinate the doping testing and contact the FISU CMI to clarify the moment or disciplines in which the tests will be carried out.
- All doping tests costs (including collection, transportation, laboratory analyses) shall be borne by the Organising Committee.

B. Athletes Selection

- Athletes are eligible for testing once accredited until departing from the official event accommodation.

Please refer to Section 3.4.2 of the General Handbook for more detailed information regarding Doping Control

11. PROTOCOL, SPORT PRESENTATION & AWARDING

11.1. MEDALS TABLE

GOLF									
TOURNAMENT	MEN			WOMEN			MIXED TEAM		
	G	S	B	G	S	B	G	S	B
Individual	1	1	1	1	1	1			
Team	3	3	3	3	3	3	3	3	3
TOTAL	4	4	4	4	4	4	3	3	3

A. FISU Requirements

The Organising Committee is responsible for providing the medals as shown in the table above. Medals must be awarded for all individual and team events. The top three athletes/teams in each discipline (individual and teams) are eligible for medals.

The table below provides a comprehensive overview of the total number of medals awarded across all competition disciplines. Please note that extra/reserve medal sets and the FISU set are not included in these figures.

GOLF MEDALS	
Gold	11
Silver	11
Bronze	11



The Organising Committee must provide FISU with a set of medals of the event

B. Recommendations & Considerations

It is crucial to have additional sets of medals on hand as a contingency. Some medals may be defective and may need to be replaced.

Medals are not mandatory for Officials in Golf

11.2. SPORT PRESENTATION

Sports presentation is vital for elevating a Championship from a competition to an unforgettable experience. It encompasses everything from music and lighting to commentary and fan engagement, creating a unique atmosphere that engages the audience.

In case there is a big screen in the venue for the spectators, some educational video (provided by IGF) regarding the rules of the sport can be displayed at the beginning of the competition day

A. FISU Requirements

- **Audio Elements**
 - Sound System: A high-quality sound system is essential for announcements, music, and commentary, ensuring clear communication and an engaging atmosphere.
 - Microphone: Essential for general announcements such as schedule, results, athletes' introduction, general information, and others.
 - Thematic Music: Curate an energetic playlist to be played during introductions, warm-ups, and medal ceremonies to elevate the excitement.

12. SERVICES

The Organising Committee should provide a variety of services for the event, including:

- Ice
- Laundry
- Wi-Fi

12.1. ICE

The supply of ice is one of the most common requests from participating delegations, particularly for injury treatment and recovery purposes.

- The Organising Committee must supply ice for treating injuries during both practice and competition, as part of the medical coverage for the event. It does not cover large quantities of ice needed for recovery treatments, such as cryotherapy.

The Organising Committee secure a reliable ice provider on standby, anticipating the request from teams and establishing clear procedures for ice procurement, including pricing and how to access this service



12.2. LAUNDRY

Laundry services are essential for many sports, particularly in long-duration competitions and team sports, where athletes may require frequent changes of clothing.

- Laundry services must be provided in all Team Sports Championships and in all sports with more than four competition days.
- Self-Service or Full-Service Laundry can be considered (hotel/accommodation and external services included in the latter)

Self-Service is the preferred option, giving more flexibility and control to the teams. If not, it is important to negotiate reduced pricing and adjust the timing for collection/delivery of uniforms with the provider

12.3. WI-FI

Wi-Fi is an essential service for university students, as it serves as a critical infrastructure that fosters communication and supports their academic responsibilities.

- Participants can easily access real-time information about event schedules, results, and updates. This allows them to plan their day effectively, ensuring they don't miss out on key events and activities.
- Participants can engage with live broadcasts, social media updates, and other digital content related to the event.
- For many students, academic responsibilities continue even during events. Wi-Fi connection ensures they can access study materials and educational resources, maintain communication with professors, and keep up with online courses.

Wi-Fi should be provided free of charge for all participants at the event, both at the accommodation sites and at the competition venues

Please refer to the Section 3.11 of the General Handbook for more detailed information on all services



13. GENERAL TIMELINE

TIMELINE	ACTIONS
Event -12 months	<ul style="list-style-type: none">• Coordination Visit<ul style="list-style-type: none">◦ Venues visit and Equipment approval (FISU TCC)• Competition programme approval (FISU TCC)• Venue medical plan approval (FISU TCC)
Event -6 months	<ul style="list-style-type: none">• General Entries (NUSFs)
Event -3 months	<ul style="list-style-type: none">• Quantitative Entries (NUSFs)• Athletes Selection (if needed)• 50% payment from participating countries (NUSFs / OC)• ITOs & NTOs list (FISU / IGF)
Event -1 months	<ul style="list-style-type: none">• Individual Entries (NUSFs)• 100% payment from participating countries (NUSFs / OC)• Final Bulletin (OC / FISU / FISU TCC)
Event -1 day	<ul style="list-style-type: none">• Accreditation and participants list confirmation (NUSFs)• Technical Officials Meeting (ITOs / NTOs / TCC / OC)• General Technical Meeting (NUSFs / OC / FISU)
EVENT	
Event +1 week	<ul style="list-style-type: none">• Send all documents and media to FISU (OC)
Event +1 month	<ul style="list-style-type: none">• Final Report to FISU (OC)

FISU WORLD UNIVERSITY CHAMPIONSHIPS

GOLF

TECHNICAL HANDBOOK

PUBLISHED BY



CONTACT

WORLD UNIVERSITY CHAMPIONSHIPS
DEPARTMENT
championships@fisu.net

This document is not
for public distribution and remains
the property of FISU

