



CHESS

TECHNICAL HANDBOOK



FISU WORLD UNIVERSITY CHAMPIONSHIPS

DEPARTMENT
WORLD UNIVERSITY CHAMPIONSHIPS
championships@fisu.net

RELEASE DATE
MARCH 2025



INTERNATIONAL
UNIVERSITY
SPORTS
FEDERATION



TABLE OF CONTENTS

1. HISTORY	2
2. STATISTICS.....	3
3. GENERAL SCHEDULE	3
4. REGISTRATION PROCEDURES	4
4.1. General Entry (Deadline: -6 months to the event).....	4
4.2. Quantitative Entry (Deadline: -3 months to the event)	4
4.3. Individual Entry (Deadline: -1 month to the event)	4
5. SPORT REGULATIONS	5
5.1. Competition Events.....	5
5.2. Classification System.....	6
5.3. Delegations Composition	6
6. TECHNICAL OFFICIALS.....	7
6.1. International Technical Officials	7
7. SPORT MINIMUM REQUIREMENTS.....	7
7.1. Competition Venues.....	7
7.2. Equipment	8
8. MEDICAL SERVICES.....	8
9. DOPING CONTROL.....	8
10. PROTOCOL, SPORT PRESENTATION & AWARDING	9
10.1. Medals Table.....	9
10.2. Sport Presentation.....	10
11. SERVICES	10
11.1. Ice.....	10
11.2. Laundry	11
11.3. Wi-Fi.....	11
12. GENERAL TIMELINE.....	12

1. HISTORY

Chess was introduced to FISU in the early nineties as a natural consequence of its esteemed reputation within academic circles, and the events have consistently enjoyed great success. The inaugural editions were held in Odessa (Ukraine, then part of the USSR) in 1990 and in Antwerp, Belgium in 1992. However, these two competitions faced a significant challenge as they were not included in the calendar of the Fédération Internationale des Échecs (FIDE). Consequently, performances in the World University Chess Championships were not recognised for titles such as International Master or Grandmaster.

During the 1994 edition held in Sofia, Bulgaria, the FISU World University Chess Championship was duly recognised for its significance. This time, the results were officially recorded by FIDE, meaning the competition was formally acknowledged and included in the events linked to FIDE's international titles. The FISU Championships had attained such a high standard that any other outcome would have been surprising. In accordance with FISU regulations and the specific nature of the competition, both men's and women's championships were structured as individual tournaments consisting of nine rounds, following the Swiss system. In addition to the individual contests, an inter-team ranking was determined by aggregating the results of the two best-performing men and women from each team. At the conclusion of the matches, three men and three women were awarded International FIDE titles.

The 1996 edition in León, Spain, also conferred the rank of International Master upon two men and one woman. The prestigious status of the FISU World University Chess Championship was reaffirmed at its fifth edition in Rotterdam, Netherlands, in 1998, which featured the participation of four Grandmasters, sixteen International Masters, and fifteen FIDE Masters in the men's competition. Among women, there were eight Grandmasters, three International Masters, and six FIDE Masters. It was a remarkable success.

Building on this impressive achievement and the high level of participation, two additional editions of the World University Chess Championships were held: the first in Ulaanbaatar, Mongolia, in 2002 and the second in Lagos, Nigeria, in 2006, where only eight nations participated. Further success followed at the World University Chess Championship in Novokuznetsk, Russia, in 2008, as well as in Zurich, Switzerland, in 2010. In 2011, chess made FISU history with competitions among the world's top university players at the World University Games Summer (previously known as Universiade) in Shenzhen, China. The last two editions of the FISU Championship in Chess were organised in Abu Dhabi, UAE, in 2016 and in the city of Aracaju, Brazil, in 2018.

In 2020, chess was combined with bridge for the inaugural FISU World University Championship in Mind Sports, which took place online due to the Covid-19 pandemic. The event was organised by the committee in Bydgoszcz, Poland. The first presential edition of the FISU Championship in Mind Sports took place in Antwerp, Belgium, in 2022.

The 2024 edition was held in Entebbe, Uganda, showcasing exceptional talent in Chess and Bridge, with students from around the globe demonstrating strategic prowess and mental agility. The event counted on the 61 athletes from 12 different countries, highlighted the rising skills of young minds but also fostered international camaraderie.

2. STATISTICS

EDITION	YEAR	COUNTRY	CITY	COUNTRIES	ATHLETES			OFFs	TOTAL
					M	W	TOT		
1	1990	URS	Odessa	13	39	19	58	15	73
2	1992	BEL	Antwerp	11	37	15	52	13	65
3	1994	BUL	Sofia	15	43	23	66	14	80
4	1996	ESP	León	13	33	20	53	14	67
5	1998	NED	Rotterdam	17	57	27	84	22	106
6	2000	BUL	Varna	18	40	14	54	9	63
7	2002	MGL	Ulaanbaatar	8	17	11	28	9	37
8	2004	TUR	Istanbul	15	42	22	64	12	76
9	2006	NGR	Lagos	8	27	16	43	16	59
10	2008	RUS	Novokuznetsk	12	33	24	57	16	73
11	2010	SUI	Zurich	21	57	39	96	29	125
12	2012	POR	Guimarães	17	40	22	62	18	80
13	2014	POL	Katowice	15	46	25	71	24	95
14	2016	UAE	Abu Dhabi	17	48	34	82	33	115
15	2018	BRA	Aracaju	13	26	24	50	11	61
16*	2020	POL	Bydgoszcz	32	263	137	400	0	400
17**	2022	BEL	Antwerp	20	97	50	147	21	168
18	2024	UGA	Entebbe	12	50	11	61	16	77

* In 2020, for the first time, the FISU World University Championship Mind Sports brought together Bridge and Chess in a single event. However, due to the Covid-19 pandemic, the on-site event was replaced with an online Championship. Consequently, the competition format was modified, and no team officials participated

** In 2022, statistics reflect the combined results of both Bridge and Chess

3. GENERAL SCHEDULE

DAY -3	DAY -2	DAY -1	DAY 1-5	DAY 6	DAY 9
A	A	GTM / OC	C	C / CC	D

Legend: A – Arrivals / CC – Closing Ceremony / C – Competition / D – Departures / GTM – General Technical Meeting / OC – Opening Ceremony / RD – Rest Day

For Chess, the competitions shall last 6 days

4. REGISTRATION PROCEDURES

4.1. GENERAL ENTRY (DEADLINE: -6 MONTHS TO THE EVENT)

The General Entry is the first stage of the registration process, where delegations are invited to register, through the NUSFs, for the Championship indicating a general interest in participating in the event.

Teams and athletes are not required to submit any documentation or undergo a selection processes.

The submission of a General Entry Form is non-binding, indicating only initial interest by the NUSF but not final commitment

4.2. QUANTITATIVE ENTRY (DEADLINE: -3 MONTHS TO THE EVENT)

During the Quantitative Entry the NUSF delegation commits to participate and confirms the delegation composition in terms of numbers and although it does not yet provide individual details, it requires the NUSFs to submit an accurate count of delegation members.

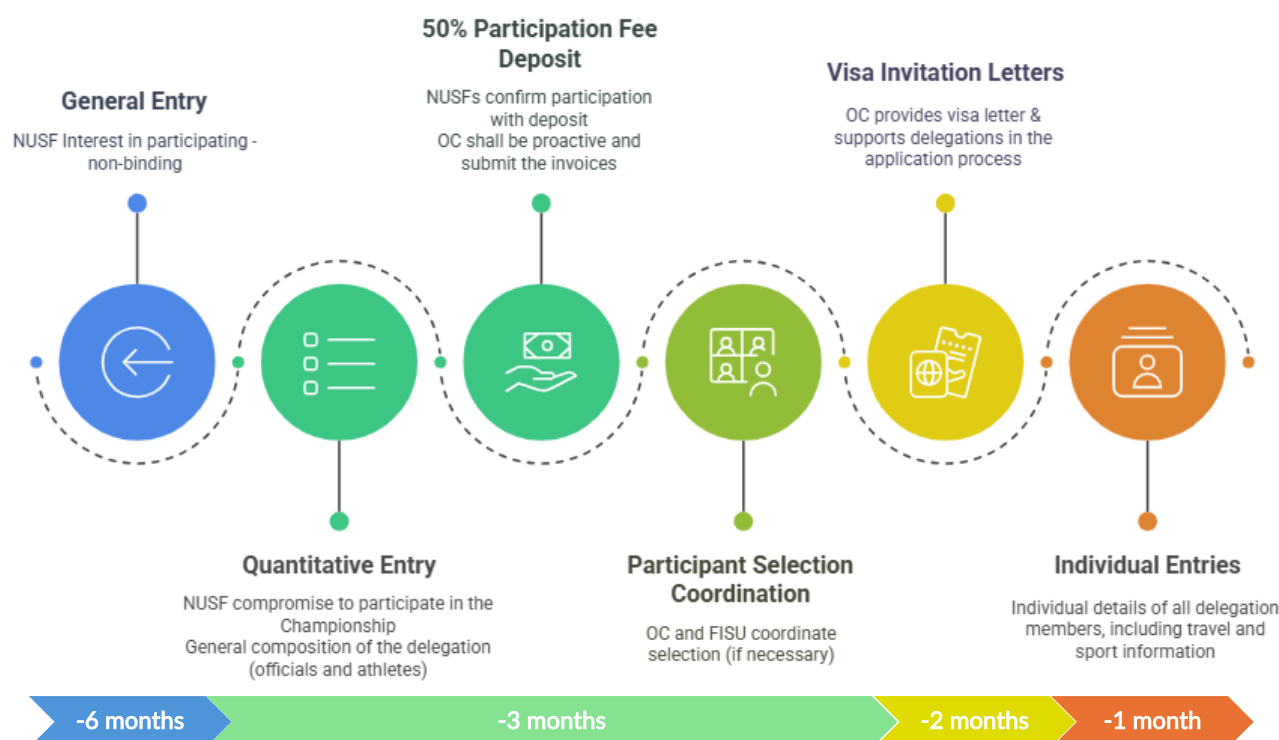
At this stage, a 50% payment of the participation fees is due and must be settled by the Quantitative Entry deadline. By proceeding with the payment, the delegation confirms its participation in the Championship.

This deposit serves as a participation guarantee, and is non-refundable in case of withdrawal, with refunds subject to FISU General Regulations and any OC-specific cancellation policies

4.3. INDIVIDUAL ENTRY (DEADLINE: -1 MONTH TO THE EVENT)

The Individual Entry is the final step in FISU event registration. The NUSF must provide all relevant data and documentation for each delegation member.

The remaining 50% of the participation fees is paid in full to the Organising Committee by this deadline. Failure to do so may result in non-participation in the Championship, unless specifically approved by the Organising Committee



5. SPORT REGULATIONS

The Chess tournaments shall be organised in accordance with the most recent technical regulations of the “Fédération Internationale des Échecs” (FIDE). In case of dispute in the interpretation of the rules, the English text shall be regarded as authoritative.

The competitions shall last 6 days as indicated in the General Schedule (Section 3) and the competition programme shall be proposed by the Organising Committee Competition Manager and confirmed by the FISU TCC, including the following events:

5.1. COMPETITION EVENTS

EVENTS	MEN's	WOMEN's
Individual	Classical	Classical
	Blitz Games	Blitz Games
Mixed Team	Classical & Blitz Games	

Classical – 6 days

Blitz Games – ½ day

The Blitz tournament consists of 9 rounds, featuring one men's tournament, one women's tournament, and a team classification

Teams are formed according to the same rules as in the Classical Games and only participants from the Classical Games are eligible to register for the Blitz Games

5.2. CLASSIFICATION SYSTEM

5.2.1. INDIVIDUAL TOURNAMENTS

The classification will be determined by the total points scored during the game.

In the event of a tie, the winner will be decided in accordance with FIDE regulations and the tournament rules applicable to the respective Chess Championship

5.2.2. TEAM CLASSIFICATION

The classification will be determined by the total points scored in the individual tournament, as well as the three best scores from at least one male and one female competitor representing the same country.

If the number of male competitors is equal to or exceeds 1.5 times the number of female competitors, the team classification will instead be based on the best results of two males and one female. Conversely, if the number of female competitors is equal to or exceeds 1.5 times the number of male competitors, the team classification will be based on the best results of two females and one male.

In the event of a tie, the winning team will be decided according to the FIDE regulations

Only countries with three or more competitors, including at least one man and one woman, will be considered for team classification

5.2.3. SEEDING METHOD

The seeding is determined according to the international ELO rating system. Players without an ELO rating will be positioned at the bottom of the starting list in alphabetical order.

The pairings for all rounds will be generated using the most recent version of the Swiss Chess Software, "Swiss Manager". This facilitates the straightforward publication of results and pairings on the website "chess-results"

5.3. DELEGATIONS COMPOSITION

A. Athletes

TOURNAMENT	MEN's	WOMEN's
Individual	Max. 3 athletes	Max. 3 athletes
Mixed Team	Max. 1 team (3 men + 3 women)	
Max. 8 athletes (5 men & 3 women, 4 men & 4 women or 3 men & 5 women) per delegation		

All participating players and coaches will require a FIDE licence as a condition of entry

At the Technical Meeting, the Head of Delegation or his/her representative shall confirm and sign the official list of competitors accredited by the CIC

B. Officials

TOTAL NUMBER OF OFFICIALS
Max. 3 officials per delegation

6. TECHNICAL OFFICIALS

6.1. INTERNATIONAL TECHNICAL OFFICIALS

For the FISU Championship, the ITOs are appointed by FIDE, with the endorsement of FISU. This appointment process considers several critical factors, including the number of participants, the level and availability of NTOs, and the goal to minimise expenses when possible. To achieve cost-efficiency, FIDE will aim to nominate ITOs from neighbouring countries whenever feasible. This approach not only fosters regional cooperation but also optimises resources.

A. Number & Roles of ITOs

INTERNATIONAL TECHNICAL OFFICIALS	
NUMBER	FUNCTION
1	Chief Arbiter
2	Deputy Arbiters
1	PGN Broadcast Arbiter
A total of 4 ITOs are required	

B. ITOs Costs

According to the Collaboration Convention signed between FISU and FIDE, the costs of the ITOs are the following:

- Organising Committee shall cover:
 - Technical Delegate's flights
 - Technical Delegate's accommodation in single room
 - Technical Delegate's meals
 - Technical Delegate's internal transportation
 - ITOs' flights
 - ITOs' accommodation
 - ITOs' meals
 - ITOs' per-diem
 - ITOs' internal transportation

7. SPORT MINIMUM REQUIREMENTS

7.1. COMPETITION VENUES

- Number of competition venues – 1
- Type of venue – Indoor
 - Visitor area of 2m around the players' tables

7.2. EQUIPMENT

A. Venue Equipment

- Chessboards & sets – better if the chessboards are electronic
- Electronic clocks

Please refer to the [Minimum Requirements document](#) for more detailed information

B. Uniforms & Sport Equipment

- Scoresheets

8. MEDICAL SERVICES

A. FISU Requirements

- First aid and Emergency Medical care
- Medical transportation
- OC on-call first aid medical services shall be available on a 24-hour basis
- A minimum of two ambulances per venue should be available and on duty from the start of warm-up until at least 45 minutes after the final competition of the day

B. Participants Medical Insurance

All participants must have valid travel medical insurance, covering:

- 24/7 Emergency Assistance
- Emergency Medical Expenses
- Medical Evacuation/Repatriation
- Trip Cancellation/Interruption
- Accidental Death or Injury

The OC is solely responsible for providing first aid, emergency medical care, and transportation to the designated hospital. All other medical costs shall be borne by the participant's insurance

Refer to Section 3.4.1 of the General Handbook for more detailed information regarding Medical Services

9. DOPING CONTROL

A. FISU Requirements

- The requirements regarding the number and type of doping tests, as well as the total number of tests to be conducted, can be found in the *FISU Doping Test Requirements* document. This information is available exclusively to the Organising Committee.
- The OC Doctor or Head of the Medical area shall coordinate the doping testing and contact the FISU CMI to clarify the moment or disciplines in which the tests will be carried out.
- All doping tests costs (including collection, transportation, laboratory analyses) shall be borne by the Organising Committee.

B. Athletes Selection

- Athletes are eligible for testing once accredited until departing from the official event accommodation.

Please refer to Section 3.4.2 of the General Handbook for more detailed information regarding Doping Control

10. PROTOCOL, SPORT PRESENTATION & AWARDING

10.1. MEDALS TABLE

CHESS									
TOURNAMENT	MEN			WOMEN			MIXED TEAM		
	G	S	B	G	S	B	G	S	B
Individual Classical	1	1	1	1	1	1			
Individual Blitz	1	1	1	1	1	1			
Team Classical							3	3	3
Team Blitz							3	3	3
TOTAL	2	2	2	2	2	2	6	6	6

A. FISU Requirements

The Organising Committee is responsible for providing the medals as shown in the table above. Medals must be awarded for all individual and mixed team events. The top three athletes/teams in each discipline (individual and mixed relay) are eligible for medals.

The table below provides a comprehensive overview of the total number of medals awarded across all competition disciplines. Please note that extra/reserve medal sets and the FISU set are not included in these figures.

CHESS MEDALS	
Gold	10
Silver	10
Bronze	10

The Organising Committee must provide FISU with a set of medals of the event

B. Recommendations & Considerations

It is crucial to have additional sets of medals on hand as a contingency. Some medals may be defective and may need to be replaced.

Medals are not mandatory for Officials in Chess

10.2. SPORT PRESENTATION

Sports presentation is vital for elevating a Championship from a competition to an unforgettable experience. It encompasses everything from music and lighting to commentary and fan engagement, creating a unique atmosphere that engages the audience.

In case there is a big screen in the venue for the spectators, some educational video (provided by FIDE) regarding the rules of the sport can be displayed at the beginning of the competition day

A. FISU Requirements

- **Audio Elements**
 - Sound System: A high-quality sound system is essential for announcements, ensuring clear communication.
 - Microphone: Essential for general announcements such as schedule, results, general information, and others.
- **Commentary and Announcing**
 - Live Announcements: Make timely announcements regarding event schedules and competition results.
- **Athletes Introduction**
 - Ceremonial Introductions: Develop exciting and personalized introductions for the athletes, showcasing their achievements and backgrounds.

B. Recommendations & Considerations

- **Commentary and Announcing**
 - Engaging Commentary: Hire knowledgeable commentators who can provide insights about the athletes, techniques, and strategies. This adds depth to the viewing experience.

11. SERVICES

The Organising Committee should provide a variety of services for the event, including:

- Ice
- Laundry
- Wi-Fi

11.1. ICE

The supply of ice is one of the most common requests from participating delegations, particularly for injury treatment and recovery purposes.

- The Organising Committee must supply ice for treating injuries during both practice and competition, as part of the medical coverage for the event. It does not cover large quantities of ice needed for recovery treatments, such as cryotherapy.

The Organising Committee secure a reliable ice provider on standby, anticipating the request from teams and establishing clear procedures for ice procurement, including pricing and how to access this service

11.2. LAUNDRY

Laundry services are essential for many sports, particularly in long-duration competitions and team sports, where athletes may require frequent changes of clothing.

- Laundry services must be provided in all Team Sports Championships and in all sports with more than four competition days.
- Self-Service or Full-Service Laundry can be considered (hotel/accommodation and external services included in the latter)

Self-Service is the preferred option, giving more flexibility and control to the teams. If not, it is important to negotiate reduced pricing and adjust the timing for collection/delivery of uniforms with the provider

11.3. WI-FI

Wi-Fi is an essential service for university students, as it serves as a critical infrastructure that fosters communication and supports their academic responsibilities.

- Participants can easily access real-time information about event schedules, results, and updates. This allows them to plan their day effectively, ensuring they don't miss out on key events and activities.
- Participants can engage with live broadcasts, social media updates, and other digital content related to the event.
- For many students, academic responsibilities continue even during events. Wi-Fi connection ensures they can access study materials and educational resources, maintain communication with professors, and keep up with online courses.

Wi-Fi should be provided free of charge for all participants at the event, both at the accommodation sites and at the competition venues

Please refer to the Section 3.11 of the General Handbook for more detailed information on all services

12. GENERAL TIMELINE

TIMELINE	ACTIONS
Event -12 months	<ul style="list-style-type: none"> • Coordination Visit <ul style="list-style-type: none"> ◦ Venues visit and Equipment approval (FISU TCC) • Competition programme approval (FISU TCC) • Venue medical plan approval (FISU TCC)
Event -6 months	<ul style="list-style-type: none"> • General Entries (NUSFs)
Event -3 months	<ul style="list-style-type: none"> • Quantitative Entries (NUSFs) • 50% payment from participating countries (NUSFs / OC) • ITOs & NTOs list (FISU / FIDE)
Event -1 months	<ul style="list-style-type: none"> • Individual Entries (NUSFs) • 100% payment from participating countries (NUSFs / OC) • Final Bulletin (OC / FISU / FISU TCC)
Event -1 day	<ul style="list-style-type: none"> • Accreditation and participants list confirmation (NUSFs) • Technical Officials Meeting (ITOs / NTOs / TCC / OC) • General Technical Meeting (NUSFs / OC / FISU)
EVENT	
Event +1 week	<ul style="list-style-type: none"> • Send all documents and media to FISU (OC)
Event +1 month	<ul style="list-style-type: none"> • Final Report to FISU (OC)

FISU WORLD UNIVERSITY CHAMPIONSHIPS CHESS TECHNICAL HANDBOOK

PUBLISHED BY



CONTACT

WORLD UNIVERSITY CHAMPIONSHIPS
DEPARTMENT
championships@fisu.net

This document is not
for public distribution and remains
the property of FISU



E 2024
IVERSITY
D SPORTS

